

For Research Use Only

# CoraLite® Plus 488-conjugated LYN Monoclonal antibody

Catalog Number: CL488-60211



## Basic Information

Catalog Number:

CL488-60211

Size:

100ul , Concentration: 1000 ug/ml by Nanodrop;

Source:

Mouse

Isotype:

IgG2a

Immunogen Catalog Number:

AG12723

GenBank Accession Number:

BC075002

GeneID (NCBI):

4067

UNIPROT ID:

P07948

Full Name:

v-src-1 Yamaguchi sarcoma viral related oncogene homolog

Calculated MW:

512 aa, 59 kDa

Observed MW:

56 kDa

Purification Method:

Protein A purification

CloneNo.:

3C7F2

Recommended Dilutions:

IF/ICC: 1:50-1:500

FC (Intra): 0.80 ug per 10<sup>6</sup> cells in a 100 µl suspension

Excitation/Emission maxima wavelengths:

493 nm / 522 nm

## Applications

Tested Applications:

IF/ICC, FC (Intra)

Species Specificity:

human, mouse

Positive Controls:

IF/ICC : HepG2 cells,

FC (Intra) : Ramos cells,

## Background Information

LYN, also named as JTK8, p53Lyn and p56Lyn, belongs to the protein kinase superfamily, Tyr protein kinase family and SRC subfamily. It is a non-receptor tyrosine-protein kinase that transmits signals from cell surface receptors and plays an important role in the regulation of innate and adaptive immune responses, hematopoiesis, responses to growth factors and cytokines, integrin signaling, but also responses to DNA damage and genotoxic agents. LYN is a component of the mTOR (mammalian target of rapamycin) pathway.

## Storage

Storage:

Store at -20°C. Avoid exposure to light. Stable for one year after shipment.

Storage Buffer:

PBS with 50% glycerol, 0.05% Proclin300, 0.5% BSA, pH7.3

Aliquoting is unnecessary for -20°C storage

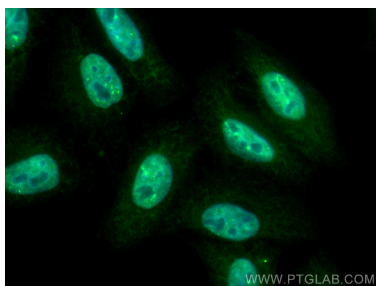
For technical support and original validation data for this product please contact:

T: 1 (888) 4PTGLAB (1-888-478-4522) (toll free in USA), or 1(312) 455-8498 (outside USA)

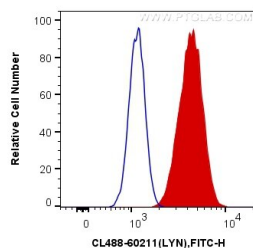
E: [proteintech@ptglab.com](mailto:proteintech@ptglab.com)  
W: [ptglab.com](http://ptglab.com)

This product is exclusively available under Proteintech Group brand and is not available to purchase from any other manufacturer.

## Selected Validation Data



Immunofluorescent analysis of (4% PFA) fixed HepG2 cells using CoraLite® Plus 488 LYN antibody (CL488-60211, Clone: 3C7F2) at dilution of 1:200.



1X10<sup>6</sup> Ramos cells were intracellularly stained with 0.8 ug CoraLite® Plus 488 Anti-Human LYN (CL488-60211, Clone:3C7F2) (red), or 0.8 ug Mouse IgG2a Isotype Control (CL488-66360-2, Clone: K11A1B2A2) (blue). Cells were fixed with 4% PFA and permeabilized with Flow Cytometry Perm Buffer (PF00011-C).