

For Research Use Only

CoraLite® Plus 488-conjugated HADHA Monoclonal antibody

Catalog Number: CL488-60250

Featured Product



Basic Information

Catalog Number:

CL488-60250

Size:

100ul , Concentration: 1000 ug/ml by Nanodrop;

Source:

Mouse

Isotype:

IgG1

Immunogen Catalog Number:

AG1211

GenBank Accession Number:

BC009235

GeneID (NCBI):

3030

UNIPROT ID:

P40939

Full Name:

hydroxyacyl-Coenzyme A dehydrogenase/3-ketoacyl-Coenzyme A thiolase/enoyl-Coenzyme A hydratase (trifunctional protein), alpha subunit

Calculated MW:

83 kDa

Purification Method:

Protein G purification

CloneNo.:

3E9B1

Recommended Dilutions:

IF/ICC 1:50-1:500

Excitation/Emission maxima wavelengths:

493 nm / 522 nm

Applications

Tested Applications:

IF/ICC

Species Specificity:

human, mouse

Positive Controls:

IF/ICC : HepG2 cells,

Background Information

HADHA (Trifunctional enzyme subunit alpha, mitochondrial) is also named as HADH, 78 kDa gastrin-binding protein. It belongs to the enoyl-CoA hydratase/isomerase family in the N-terminal section and the 3-hydroxyacyl-CoA dehydrogenase family in the central section. It harbors the 3-hydroxyacyl-CoA dehydrogenase and enoyl-CoA hydratase activities. Defects in HADHA are a cause of trifunctional protein deficiency (TFP deficiency) and long-chain 3-hydroxyacyl-CoA dehydrogenase deficiency (LCHAD deficiency) and maternal acute fatty liver of pregnancy (AFLP).

Storage

Storage:

Store at -20°C. Avoid exposure to light. Stable for one year after shipment.

Storage Buffer:

PBS with 50% Glycerol, 0.05% Proclin300, 0.5% BSA, pH 7.3.

Aliquoting is unnecessary for -20°C storage

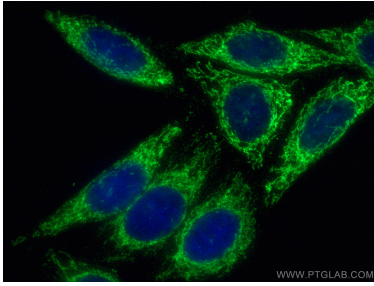
For technical support and original validation data for this product please contact:

T: 1 (888) 4PTGLAB (1-888-478-4522) (toll free in USA), or 1(312) 455-8498 (outside USA)

E: proteintech@ptglab.com
W: ptglab.com

This product is exclusively available under Proteintech Group brand and is not available to purchase from any other manufacturer.

Selected Validation Data



Immunofluorescent analysis of (4% PFA) fixed HepG2 cells using Coralite® Plus 488 HADHA antibody (CL488-60250, Clone: 3E9B1) at dilution of 1:200.