

For Research Use Only

CoraLite® Plus 488-conjugated IL-36 Beta/IL-1F8 Monoclonal antibody



Catalog Number:CL488-60290

Basic Information

Catalog Number: CL488-60290	GenBank Accession Number: BC101833	Purification Method: Protein G purification
Size: 100ul , Concentration: 1000 µg/ml by Nanodrop;	GeneID (NCBI): 27177	CloneNo.: 10D12B1
Source: Mouse	Full Name: interleukin 1 family, member 8 (eta)	Recommended Dilutions: IF 1:50-1:500
Isotype: IgG1	Calculated MW: 157 aa, 18 kDa	Excitation/Emission maxima wavelengths: 488 nm / 515 nm
Immunogen Catalog Number: AG12675		

Applications

Tested Applications: IF	Positive Controls: IF : human tonsillitis tissue,
Species Specificity: human	

Background Information

Storage

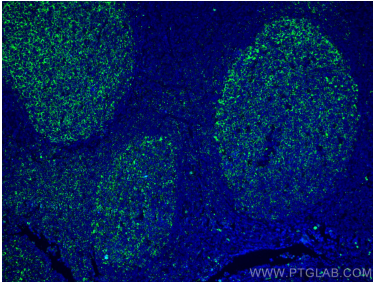
Storage:
Store at -20°C. Avoid exposure to light.
Storage Buffer:
PBS with 50% Glycerol, 0.05% Proclin300, 0.5% BSA, pH 7.3.
Aliquoting is unnecessary for -20°C storage

*** 20ul sizes contain 0.1% BSA

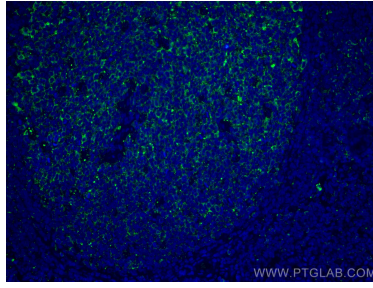
For technical support and original validation data for this product please contact:
T: 1 (888) 4PTGLAB (1-888-478-4522) (toll free in USA), or 1(312) 455-8498 (outside USA) E: proteintech@ptglab.com
W: ptglab.com

This product is exclusively available under Proteintech Group brand and is not available to purchase from any other manufacturer.

Selected Validation Data



Immunofluorescent analysis of (4% PFA) fixed human tonsillitis tissue using CoraLite® Plus 488 IL-36 Beta/IL-1F8 antibody (CL488-60290, Clone: 10D12B1) at dilution of 1:200.



Immunofluorescent analysis of (4% PFA) fixed human tonsillitis tissue using CoraLite® Plus 488 IL-36 Beta/IL-1F8 antibody (CL488-60290, Clone: 10D12B1) at dilution of 1:200.