

For Research Use Only

CoraLite®488-conjugated GOT1 Monoclonal antibody



Catalog Number:CL488-60317

Basic Information

Catalog Number: CL488-60317	GenBank Accession Number: BC000498	Purification Method: Protein G purification
Size: 100UL, Concentration: 2000 µg/ml by 2805 Bradford method using BSA as the standard;	GeneID (NCBI): 2805	CloneNo.: 5A12E10
Source: Mouse	Full Name: glutamic-oxaloacetic transaminase 1, IF soluble (aspartate aminotransferase 1)	Recommended Dilutions: 1:50-1:500
Isotype: IgG1	Calculated MW: 46 kDa	Excitation/Emission maxima wavelengths: 488 nm/515 nm
Immunogen Catalog Number: AG7012		

Applications

Tested Applications: IF, ELISA	Positive Controls: IF : HepG2 cells,
Species Specificity: human	

Background Information

Glutamate oxaloacetate transaminase 1 (GOT1) catalyzes the reversible reaction of L-aspartate and alpha-ketoglutarate into oxaloacetate and L-glutamate and plays a key role in carbon and nitrogen metabolism. GOT1 can potentially control the intracellular levels of reactive oxygen species (ROS) through NADPH synthesis and enhances tumor growth. GOT1 expression correlates with the growth of several tumors.

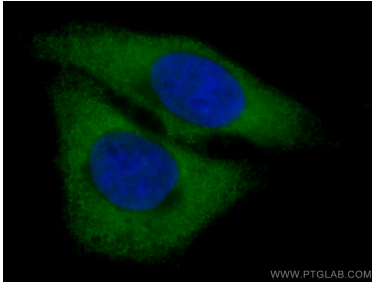
Storage

Storage:
Store at -20°C. Avoid exposure to light. Stable for one year after shipment.
Storage Buffer:
PBS with 0.02% sodium azide and 50% glycerol pH 7.3.
Aliquoting is unnecessary for -20°C storage

For technical support and original validation data for this product please contact:
T: 1 (888) 4PTGLAB (1-888-478-4522) (toll free in USA), or 1(312) 455-8498 (outside USA)
E: proteintech@ptglab.com
W: ptglab.com

This product is exclusively available under Proteintech Group brand and is not available to purchase from any other manufacturer.

Selected Validation Data



Immunofluorescent analysis of (-20°C Ethanol) fixed HepG2 cells using CL488-60317 (GOT1 antibody) at dilution of 1:100.