

For Research Use Only

# CoraLite® Plus 488 Anti-Mouse CD3 (17A2)



Catalog Number: **CL488-65077**

## Basic Information

<b>Catalog Number:</b> CL488-65077	<b>GenBank Accession Number:</b> BC098236	<b>Purification Method:</b> Affinity purification
<b>Size:</b> 100ug , 500 µg/ml	<b>GeneID (NCBI):</b> 12501	<b>CloneNo.:</b> 17A2
<b>Source:</b> Rat	<b>UNIPROT ID:</b> P22646	<b>Recommended Dilutions:</b> IF 1:250-1:1000
<b>Isotype:</b> IgG2b, kappa	<b>Full Name:</b> CD3 antigen, epsilon polypeptide	<b>Excitation/Emission maxima wavelengths:</b> 493 nm / 522 nm

## Applications

<b>Tested Applications:</b> IF, FC	<b>Positive Controls:</b> IF : mouse splenocytes,
<b>Species Specificity:</b> Mouse	

## Background Information

CD3 is a multimeric protein associated with the T-cell receptor (TCR) to form a complex involved in antigen recognition and signal transduction (PMID: 15885124). CD3 is composed of CD3γ, δ, ε, and ζ chains (PMID: 1826255). It is expressed by thymocytes in a developmentally regulated manner, T cells, and some NK cells (PMID: 3289580). The TCR recognizes antigens bound to major histocompatibility complex (MHC) molecules. TCR-mediated peptide-MHC recognition is transmitted to the CD3 complex, leading to the intracellular signal transduction (PMID: 11985657).

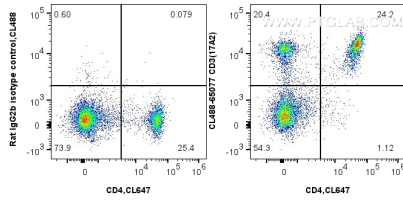
## Storage

**Storage:**  
Store at 2-8°C. Avoid exposure to light. Stable for one year after shipment.  
**Storage Buffer:**  
PBS with 0.1% sodium azide and 0.5% BSA, pH 7.3.

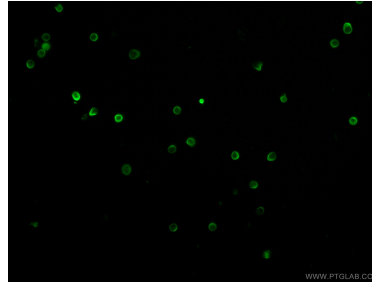
For technical support and original validation data for this product please contact:  
T: 1 (888) 4PTGLAB (1-888-478-4522) (toll free in USA), or 1(312) 455-8498 (outside USA)      E: proteintech@ptglab.com  
W: ptglab.com

This product is exclusively available under Proteintech Group brand and is not available to purchase from any other manufacturer.

## Selected Validation Data



1X10<sup>6</sup> mouse splenocytes were surface stained with 0.5 ug CoraLite® Plus 488 Anti-Mouse CD3 (CL488-65077, Clone:17A2) or 0.5 ug CoraLite® Plus 488 Rat IgG2b Isotype Control (LTF-2) (CL488-65211, Clone: LTF-2), and 0.5 ug CoraLite® Plus 647 Anti-Mouse CD4 (GK1.5) (CL647-65104, Clone: GK1.5). Cells were not fixed.



Immunofluorescent analysis of mouse splenocytes using CoraLite® Plus 488-conjugated Anti-Mouse CD3 (CL488-65077, Clone: 17A2) at dilution of 1:500.