

For Research Use Only

# CoraLite® Plus 488 Anti-Mouse KLRG1 (2F1)



Catalog Number: **CL488-65084**

## Basic Information

Catalog Number:

CL488-65084

Size:

100ug , 500 µg/ml

Source:

Golden Syrian Hamster

Isotype:

IgG

GenBank Accession Number:

BC101953

GeneID (NCBI):

50928

UNIPROT ID:

O88713

Full Name:

killer cell lectin-like receptor  
subfamily G, member 1

Purification Method:

Affinity purification

CloneNo.:

2F1

Excitation/Emission maxima  
wavelengths:

493 nm / 522 nm

## Applications

Tested Applications:

FC

Species Specificity:

Mouse

## Background Information

KLRG1 (killer cell lectin-like receptor subfamily G, member 1) is a C-type lectin inhibitory receptor that contains an immunoreceptor tyrosine-based inhibitory motif (ITIM) in its cytoplasmic domain. KLRG1 is expressed by subsets of NK and T cells, existing both as a monomer and as a disulfide-linked homodimer (PMID: 10741410; 19604491). It is considered to be a cell differentiation marker for NK and T cells and is strongly induced by viral and other infections (PMID: 20373518). Through interactions with members of the cadherin family, KLRG1 plays an inhibitory role on NK- and T-cell function (PMID: 19009530; 20373518).

## Storage

Storage:

Store at 2-8°C. Avoid exposure to light. Stable for one year after shipment.

Storage Buffer:

PBS with 0.1% sodium azide and 0.5% BSA, pH 7.3.

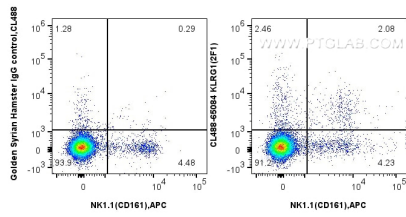
For technical support and original validation data for this product please contact:

T: 1 (888) 4PTGLAB (1-888-478-4522) (toll free  
in USA), or 1(312) 455-8498 (outside USA)

E: [proteintech@ptglab.com](mailto:proteintech@ptglab.com)  
W: [ptglab.com](http://ptglab.com)

This product is exclusively available under Proteintech Group brand and is not available to purchase from any other manufacturer.

## Selected Validation Data



1x10<sup>6</sup> mouse splenocytes were surface stained with 0.5 ug CoraLite® Plus 488 Anti-Mouse KLRG1 (2F1) (CL488-65084, Clone:2F1) or 0.5 ug Isotype Control, and 0.5 ug APC Anti-Mouse NK1.1 (CD161) (PK136) (APC-65138, Clone: PK136). Cells were not fixed.