

For Research Use Only

CoraLite®488-conjugated Anti-Human CD20 (2H7)



Catalog Number:CL488-65085

Basic Information

Catalog Number:

CL488-65085

Size:

100tests , 5 µl/test

Source:

Mouse

Isotype:

Mouse IgG2b, kappa

GenBank Accession Number:

BC002807

GeneID (NCBI):

931

Full Name:

membrane-spanning 4-domains, subfamily A, member 1

Calculated MW:

297 aa, 33 kDa

Purification Method:

Affinity purification

CloneNo.:

2H7

Excitation/Emission maxima wavelengths:

488 nm/515 nm

Applications

Tested Applications:

FC

Species Specificity:

Human

Background Information

CD20 is a 33-37 kDa transmembrane phosphoprotein belonging to the membrane-spanning 4A family (PMID: 3260267; 16785532). CD20 is a B-lymphocyte surface molecule that is widely expressed during B-cell ontogeny, from early pre-B-cell developmental stages until final differentiation into plasma cells (PMID: 7524522). CD20 functions as calcium-permeable cation channel (PMID: 7684739). It is involved in the regulation of B-cell activation, proliferation and differentiation (PMID: 7524522).

Storage

Storage:

Store at 2-8°C. Avoid exposure to light.

Storage Buffer:

PBS with 0.1% sodium azide and 0.5% BSA, pH 7.3.

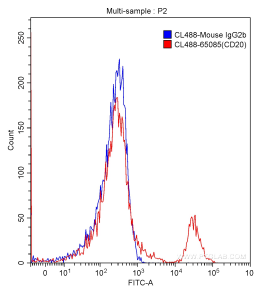
For technical support and original validation data for this product please contact:

T: 1 (888) 4PTGLAB (1-888-478-4522) (toll free in USA), or 1(312) 455-8498 (outside USA)

E: proteintech@ptglab.com
W: ptglab.com

This product is exclusively available under Proteintech Group brand and is not available to purchase from any other manufacturer.

Selected Validation Data



1X10⁶ human peripheral blood lymphocytes were surface stained with 5.00 ul/test CoraLite®488-conjugated Anti-Human CD20 (CL488-65085, Clone: 2H7) (red) or isotype control antibody (blue). Samples were not fixed.