

For Research Use Only

# CoraLite® Plus 488 Anti-Human CD11c (3.9)

Catalog Number: CL488-65086



## Basic Information

Catalog Number:

CL488-65086

Size:

100 tests, 5 µl/test

Source:

Mouse

Isotype:

IgG1, kappa

GenBank Accession Number:

BC038237

GeneID (NCBI):

3687

ENSEMBL Gene ID:

ENSG00000140678

UNIPROT ID:

P20702

Full Name:

integrin, alpha X (complement component 3 receptor 4 subunit)

Calculated MW:

1169 aa, 129 kDa

Purification Method:

Affinity purification

CloneNo.:

3.9

Recommended Dilutions:

FC: 5 µl per 10<sup>6</sup> cells in 100 µl suspension

Excitation/Emission maxima wavelengths:

493 nm / 522 nm

## Applications

Tested Applications:

FC

Species Specificity:

Human

Positive Controls:

FC : human PBMCs,

## Background Information

Integrins are cell adhesion receptors that are heterodimers composed of non-covalently associated  $\alpha$  and  $\beta$  subunits (PMID: 9779984). CD11c, also known as integrin  $\alpha$ X, is a type I transmembrane glycoprotein present on a variety of cells, including monocytes/macrophages, granulocytes, a subset of B cells, NK cells and dendritic cells (PMID: 2897326; 1680915; 1694698; 17389580). As a result of its high level of expression on most dendritic cells, CD11c is typically considered to be a marker of conventional dendritic cells (PMID: 27119555). CD11c forms an  $\alpha/\beta$  heterodimer with CD18 (integrin  $\beta$ 2). CD11c/CD18 acts a receptor for fibrinogen and is important in monocyte adhesion and chemotaxis (PMID: 1671533).

## Storage

Storage:

Store at 2-8°C. Avoid exposure to light. Stable for one year after shipment.

Storage Buffer:

PBS with 0.09% sodium azide and 0.5% BSA, pH7.3

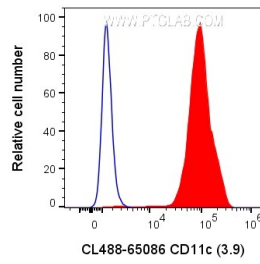
For technical support and original validation data for this product please contact:

T: 1 (888) 4PTGLAB (1-888-478-4522) (toll free in USA), or 1(312) 455-8498 (outside USA)

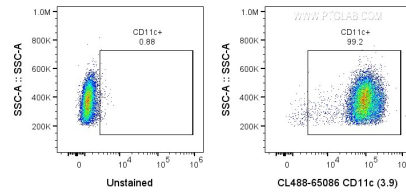
E: [proteintech@ptglab.com](mailto:proteintech@ptglab.com)  
W: [ptglab.com](http://ptglab.com)

This product is exclusively available under Proteintech Group brand and is not available to purchase from any other manufacturer.

## Selected Validation Data



1X10<sup>6</sup> human PBMCs were surface stained with 5 ul CoraLite® Plus 488 Anti-Human CD11c (CL488-65086, Clone:3.9) (red) or unstained (blue). Cells were not fixed. Monocytes were gated.



1X10<sup>6</sup> human PBMCs were surface stained with 5 ul CoraLite® Plus 488 Anti-Human CD11c (CL488-65086, Clone:3.9) or unstained. Cells were not fixed. Monocytes were gated.