

For Research Use Only

CoraLite® Plus 488 Anti-Mouse FcεR1 (MAR-1)



Catalog Number: **CL488-65091**

Basic Information

| | | |
|---------------------------------------|---|---|
| Catalog Number: CL488-65091 | GenBank Accession Number: BC125455 | Purification Method: Affinity purification |
| Size: 100tests , 5 µl/test | GeneID (NCBI): 14125 | CloneNo.: MAR-1 |
| Source: Armenian Hamster | Full Name: Fc receptor, IgE, high affinity I, alpha polypeptide | Excitation/Emission maxima wavelengths: 493 nm / 522 nm |
| Isotype: IgG | | |

Applications

Tested Applications:
FC

Species Specificity:
Mouse

Background Information

Fc epsilon Receptor I alpha (FceR1a) is a single-pass type I membrane protein which contains 2 immunoglobulin-like domains. FceR1a forms a tetrameric complex with one beta and two gamma subunits (PMID: 19406478). FceR1 is the high-affinity receptor for the Fc region of immunoglobulin E (IgE) (PMID: 1532373). It is expressed on mast cells and basophils and plays a central role in the allergic response (PMID: 2148316).

Storage

Storage:
Store at 2-8°C. Avoid exposure to light. Stable for one year after shipment.

Storage Buffer:
PBS with 0.1% sodium azide and 0.5% BSA, pH 7.3.

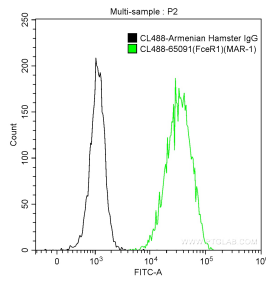
For technical support and original validation data for this product please contact:

T: 1 (888) 4PTGLAB (1-888-478-4522) (toll free in USA), or 1(312) 455-8498 (outside USA)

E: proteintech@ptglab.com
W: ptglab.com

This product is exclusively available under Proteintech Group brand and is not available to purchase from any other manufacturer.

Selected Validation Data



1X10⁶ MC/9 cells were surface stained with 5 ul CoraLite® Plus 488 Anti-Mouse FcεR1 (CL488-65091, Clone:MAR-1) (green) or CoraLite® Plus 488 Armenian Hamster IgG isotype control (black). Cells were not fixed.