

For Research Use Only

CoraLite®488-conjugated Anti-Human CD25 (BC96)



Catalog Number: CL488-65096

Basic Information

Catalog Number: CL488-65096	GenBank Accession Number: BC156627	Purification Method: Affinity purification
Size: 100tests , 5 µl/test	GeneID (NCBI): 3559	CloneNo.: BC96
Source: Mouse	Full Name: interleukin 2 receptor, alpha	Excitation/Emission maxima wavelengths: 488 nm/515 nm
Isotype: IgG1	Calculated MW: 272 aa, 31 kDa	

Applications

Tested Applications:
FC

Species Specificity:
Human

Background Information

Proliferation of T lymphocytes is triggered by the interaction of IL-2 with its specific receptor following T lymphocyte activation. The receptor for IL-2 has three forms, generated by different combinations of three different proteins, the alpha chain (IL-2R alpha), the beta chain (IL-2R beta), and the gamma chain (IL-2R gamma) (PMID: 8476561). IL-2R alpha (also known as CD25) is a type I transmembrane protein present on activated T cells, activated B cells, some thymocytes, myeloid precursors, and oligodendrocytes. CD25 is also found on natural CD4⁺Foxp3⁺Treg cells and a subset of human CD4⁺ memory T cells (PMID: 22585674).

Storage

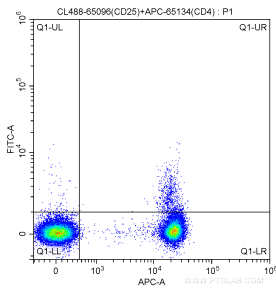
Storage:
Store at 2-8°C. Avoid exposure to light.

Storage Buffer:
PBS with 0.1% sodium azide and 0.5% BSA, pH 7.3.

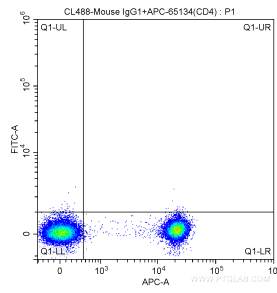
For technical support and original validation data for this product please contact:
T: 1 (888) 4PTGLAB (1-888-478-4522) (toll free in USA), or 1(312) 455-8498 (outside USA)
E: proteintech@ptglab.com
W: ptglab.com

This product is exclusively available under Proteintech Group brand and is not available to purchase from any other manufacturer.

Selected Validation Data



1X10⁶ human peripheral blood mononuclear cells (PBMCs) were surface stained with APC Anti-Human CD4 (APC-65134, Clone: OKT4) and 5.00 ul CoraLite®488-conjugated Anti-Human CD25 (CL488-65096, Clone: BC96). Cells were not fixed.



1X10⁶ human peripheral blood mononuclear cells (PBMCs) were surface stained with APC Anti-Human CD4 (APC-65134, Clone: OKT4) and CoraLite®488-conjugated Mouse IgG1 isotype control antibody. Cells were not fixed.