

For Research Use Only

CoraLite® Plus 488 Anti-Human CD38 (HB7)

Catalog Number: CL488-65107



Basic Information

Catalog Number:

CL488-65107

Size:

100 tests, 5 µl/test

Source:

Mouse

Isotype:

IgG1, kappa

GenBank Accession Number:

BC007964

GeneID (NCBI):

952

ENSEMBL Gene ID:

ENSG00000004468

Full Name:

CD38 molecule

Calculated MW:

300 aa, 34 kDa

Purification Method:

Affinity purification

CloneNo.:

HB7

Recommended Dilutions:

IF/ICC: 1:200-1:800

FC: 5 µl per 10⁶ cells in 100 µl suspension

Excitation/Emission maxima wavelengths:

493 nm / 522 nm

Applications

Tested Applications:

IF, FC

Species Specificity:

Human

Positive Controls:

IF/ICC : human peripheral blood mononuclear cells,

FC : human peripheral blood lymphocytes,

Background Information

CD38, also known as ADP-ribosyl cyclase 1, is a type II transmembrane glycoprotein with a short N-terminal cytoplasmic tail, a single membrane-spanning domain, and a C-terminal extracellular region with four N-glycosylation sites (PMID: 2319135). The extracellular domain of CD38 has bifunctional enzyme activities that catalyze synthesis of cyclic ADP ribose from nicotinamide adenine dinucleotide (NAD) and hydrolysis of cyclic ADP ribose to adenosine diphosphoribose (PMID: 10636863). CD38 is expressed on a variety of hematopoietic and non-hematopoietic cells and is involved in diverse processes such as generation of calcium-mobilizing metabolites, cell activation, and chemotaxis (PMID: 25938500).

Storage

Storage:

Store at 2-8°C. Avoid exposure to light. Stable for one year after shipment.

Storage Buffer:

PBS with 0.09% sodium azide and 0.5% BSA, pH7.3

For technical support and original validation data for this product please contact:

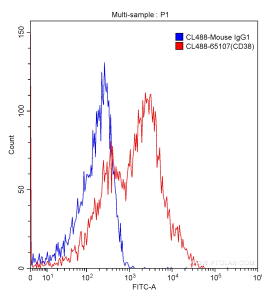
T: 1 (888) 4PTGLAB (1-888-478-4522) (toll free in USA), or 1(312) 455-8498 (outside USA)

E: proteintech@ptglab.com

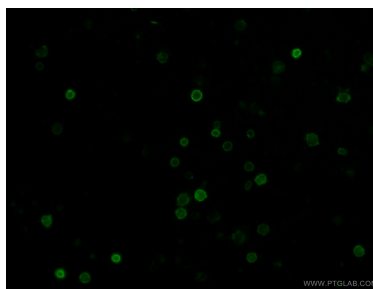
W: ptglab.com

This product is exclusively available under Proteintech Group brand and is not available to purchase from any other manufacturer.

Selected Validation Data



100 ul human peripheral blood were surface stained 5.00 ul/test CoraLite® Plus 488-conjugated Anti-Human CD38 (CL488-65107, Clone:HB7) (red) or isotype control antibody (blue). Lymphocytes were gated for analysis. Cells were not fixed.



Immunofluorescent analysis of human peripheral blood mononuclear cells (PBMCs) using CoraLite® Plus 488-conjugated Anti-Human CD38 (CL488-65107, Clone:HB7) at dilution of 1:400.