

For Research Use Only

# CoraLite® Plus 488 Anti-Human CD161 (HP-3G10)

Catalog Number: CL488-65115



## Basic Information

Catalog Number:

CL488-65115

Size:

100 tests, 5 µl/test

Source:

Mouse

Isotype:

IgG1, kappa

GenBank Accession Number:

BC114516

GeneID (NCBI):

3820

ENSEMBL Gene ID:

ENSG00000111796

UNIPROT ID:

Q12918

Full Name:

killer cell lectin-like receptor  
subfamily B, member 1

Calculated MW:

225 aa, 25 kDa

Purification Method:

Affinity purification

CloneNo.:

HP-3G10

Recommended Dilutions:

FC: 5 µl per 10<sup>6</sup> cells in 100 µl  
suspension

Excitation/Emission maxima  
wavelengths:

493 nm / 522 nm

## Applications

Tested Applications:

FC

Species Specificity:

Human

Positive Controls:

FC : human peripheral blood lymphocytes,

## Storage

Storage:

Store at 2-8°C. Avoid exposure to light. Stable for one year after shipment.

Storage Buffer:

PBS with 0.09% sodium azide and 0.5% BSA, pH7.3

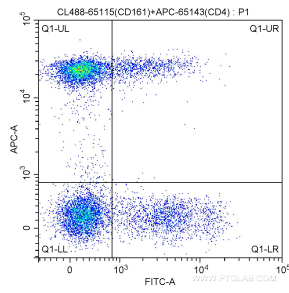
For technical support and original validation data for this product please contact:

T: 1 (888) 4PTGLAB (1-888-478-4522) (toll free  
in USA), or 1(312) 455-8498 (outside USA)

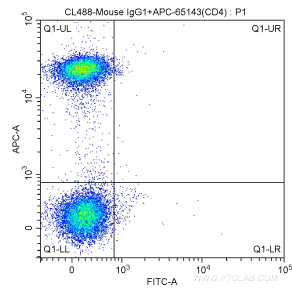
E: [proteintech@ptglab.com](mailto:proteintech@ptglab.com)  
W: [ptglab.com](http://ptglab.com)

This product is exclusively available under Proteintech Group brand and is not available to purchase from any other manufacturer.

## Selected Validation Data



100 ul human peripheral blood were surface stained with APC-Anti-Human CD4 (APC-65143, Clone: RPA-T4) and 5.00 ul CoraLite® Plus 488-conjugated Anti-Human CD161 (CL488-65115, Clone:HP-3G10). Lymphocytes were gated for analysis. Cells were not fixed.



100 ul human peripheral blood were surface stained with APC-Anti-Human CD4 (APC-65143, Clone: RPA-T4) and CoraLite® Plus 488-conjugated Mouse IgG1 isotype control antibody. Lymphocytes were gated for analysis. Cells were not fixed.