

For Research Use Only

# CoraLite® Plus 488 Anti-Human CD11b (ICRF44)

Catalog Number: CL488-65116



## Basic Information

### Catalog Number:

CL488-65116

### Size:

100 tests, 5 µl/test

### Source:

Mouse

### Isotype:

IgG1, kappa

### GenBank Accession Number:

BC096346

### GeneID (NCBI):

3684

### ENSEMBL Gene ID:

ENSG00000169896

### UNIPROT ID:

P11215

### Full Name:

integrin, alpha M (complement component 3 receptor 3 subunit)

### Calculated MW:

1152 aa, 127 kDa

### Purification Method:

Affinity purification

### CloneNo.:

ICRF44

### Recommended Dilutions:

IF/ICC: 1:200-1:800

FC: 5 µl per 10<sup>6</sup> cells in 100 µl suspension

### Excitation/Emission maximum wavelengths:

493 nm / 522 nm

## Applications

### Tested Applications:

IF/ICC, FC

### Species Specificity:

human

### Positive Controls:

IF/ICC : human peripheral blood mononuclear cells,

FC : human PBMCs,

## Background Information

Integrins are cell adhesion receptors that are heterodimers composed of non-covalently associated  $\alpha$  and  $\beta$  subunits (PMID: 9779984). CD11b, also known as Integrin alpha M or CR3A, belongs to the integrin alpha chain family. CD11b forms an  $\alpha/\beta$  heterodimer with CD18 (integrin  $\beta$ 2). CD11b/CD18 is implicated in various adhesive interactions of monocytes, macrophages and granulocytes as well as in mediating the uptake of complement-coated particles and pathogens (PMID: 9558116; 20008295). CD11b/CD18 is a receptor for the complement protein fragment iC3b, and is also a receptor for fibrinogen, factor X and ICAM1 (PMID: 2971974; 15485828).

## Storage

### Storage:

Store at 2-8°C. Avoid exposure to light. Stable for one year after shipment.

### Storage Buffer:

PBS with 0.09% sodium azide and 0.5% BSA, pH7.3

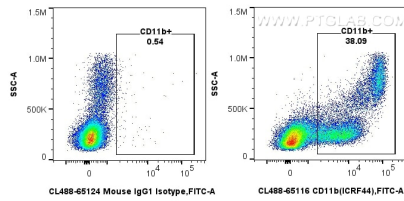
For technical support and original validation data for this product please contact:

T: 1 (888) 4PTGLAB (1-888-478-4522) (toll free in USA), or 1(312) 455-8498 (outside USA)

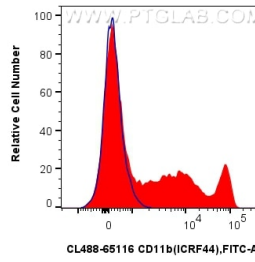
E: [proteintech@ptglab.com](mailto:proteintech@ptglab.com)  
W: [ptglab.com](http://ptglab.com)

This product is exclusively available under Proteintech Group brand and is not available to purchase from any other manufacturer.

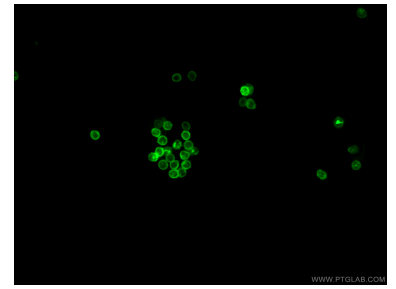
## Selected Validation Data



1x10<sup>6</sup> human PBMCs were surface stained with 5 ul CoraLite® Plus 488 Anti-Human CD11b (ICRF44) (CL488-65116, Clone: ICRF44) or CoraLite® Plus 488 Mouse IgG1 Isotype Control (MOPC-21) (CL488-65124, Clone: MOPC-21). Cells were incubated with FC Receptor Block prior to staining. Cells were not fixed.



1x10<sup>6</sup> human PBMCs were surface stained with 5 ul CoraLite® Plus 488 Anti-Human CD11b (ICRF44) (CL488-65116, Clone: ICRF44) (red), or CoraLite® Plus 488 Mouse IgG1 Isotype Control (MOPC-21) (CL488-65124, Clone: MOPC-21) (blue). Cells were incubated with FC Receptor Block prior to staining. Cells were not fixed.



Immunofluorescent analysis of human peripheral blood mononuclear cells (PBMCs) using CoraLite® Plus 488-conjugated Anti-Human CD11b (CL488-65116, Clone: ICRF44) at dilution of 1:400.