

For Research Use Only

CoraLite®488-conjugated CD29 Mouse McAb



Catalog Number:CL488-65191

Basic Information

Catalog Number:

CL488-65191

Size:

100tests , 5 µl/test

Source:

Mouse

Isotype:

Mouse IgG1, kappa

GenBank Accession Number:

BC020057

GeneID (NCBI):

3688

Full Name:

integrin, beta 1 (fibronectin receptor,
beta polypeptide, antigen CD29
includes MDF2, MSK12)

Calculated MW:

88 kDa

Purification Method:

Protein G purification

CloneNo.:

TS2/16

Excitation/Emission maxima

wavelengths:

488 nm/515 nm

Applications

Tested Applications:

FC

Species Specificity:

Human

Background Information

Integrin beta-1 (ITGB1), also named as CD29, is a 130 kDa single chain type I glycoprotein that is expressed in a heterodimeric complex with one of six distinct α subunits, comprising the very late activation antigen (VLA) subfamily of adhesion receptors. It is one of the essential surface molecules expressed on human MSC from bone marrow and other sources. The β 1 subunit is also broadly expressed on lymphocytes and monocytes, weakly expressed on granulocytes, and not expressed on erythrocytes. These receptors are involved in a variety of cell-cell and cell-matrix interactions.

Storage

Storage:

Store at 2-8°C. Avoid exposure to light.

Storage Buffer:

PBS with 0.1% sodium azide and 0.5% BSA, pH 7.3.

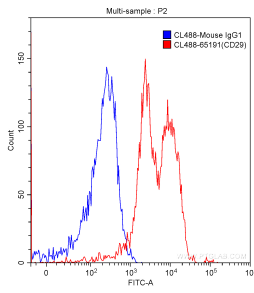
For technical support and original validation data for this product please contact:

T: 1 (888) 4PTGLAB (1-888-478-4522) (toll free
in USA), or 1(312) 455-8498 (outside USA)

E: proteintech@ptglab.com
W: ptglab.com

This product is exclusively available under Proteintech Group brand and is not available to purchase from any other manufacturer.

Selected Validation Data



1X10⁶ human peripheral blood lymphocytes were surface stained with 5 ul CoraLite®488-conjugated Anti-Human CD29 (CL488-65191, Clone: TS2/16) (red) or isotype control antibody (blue). Samples were not fixed.