

For Research Use Only

CoraLite®488-conjugated CD11a Mouse McAb



Catalog Number:CL488-65194

Basic Information

Catalog Number: CL488-65194	GenBank Accession Number: BC008777	Purification Method: Protein G purification
Size: 100tests , 5 µl/test	GeneID (NCBI): 3683	CloneNo.: TS2/4
Source: Mouse	Full Name: integrin, alpha L (antigen CD11A (p180), lymphocyte function- associated antigen 1; alpha polypeptide)	Excitation/Emission maxima wavelengths: 488 nm/515 nm
Isotype: Mouse IgG1, kappa	Calculated MW: 129 kDa	

Applications

Tested Applications:
FC

Species Specificity:
Human

Background Information

CD11a, also known as integrin αL or LFA-1α, is a 170-180 kDa transmembrane glycoprotein that forms a heterodimer with CD18 (PMID: 7027264; 1672643). CD11a/CD18 (LFA-1) is expressed by all leukocytes and mediates cell adhesion through interactions with its ligands, intercellular adhesion molecule 1 (ICAM-1), ICAM-2, and ICAM-3 (PMID: 7479767). CD11a/CD18 also functions in lymphocyte costimulatory signaling (PMID: 1972160).

Storage

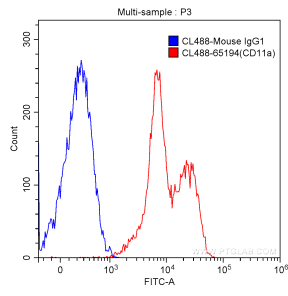
Storage:
Store at 2-8°C. Avoid exposure to light.

Storage Buffer:
PBS with 0.1% sodium azide and 0.5% BSA, pH 7.3.

For technical support and original validation data for this product please contact:
T: 1 (888) 4PTGLAB (1-888-478-4522) (toll free in USA), or 1(312) 455-8498 (outside USA) E: proteintech@ptglab.com
W: ptglab.com

This product is exclusively available under Proteintech Group brand and is not available to purchase from any other manufacturer.

Selected Validation Data



1X10⁶ human peripheral blood lymphocytes were surface stained with 5 ul CoraLite®488-conjugated Anti-Human CD11a (CL488-65194, Clone: TS2/4) (red) or isotype control antibody (blue). Samples were not fixed.