

For Research Use Only

CoraLite®488-conjugated 6*His, His-Tag Monoclonal antibody



Catalog Number: **CL488-66005**

Basic Information

Catalog Number:

CL488-66005

GenBank Accession Number:

GeneID (NCBI):

Size:

100UL, Concentration: 2000 µg/ml by Bradford method using BSA as the standard;

Full Name:

Calculated MW:

1 kDa

Purification Method:

Protein G purification

CloneNo.:

1B7G5

Recommended Dilutions:

IF 1:50-1:500

Excitation/Emission maxima wavelengths:

488 nm/515 nm

Source:

Mouse

Isotype:

IgG1

Applications

Tested Applications:

IF, ELISA

Species Specificity:

recombinant protein

Positive Controls:

IF : Transfected HEK-293 cells,

Background Information

Protein tags are protein or peptide sequences located either on the C- or N- terminal of the target protein, which facilitates one or several of the following characteristics: solubility, detection, purification, localization and expression. His-tag is often used for affinity purification and binding assays. Expressed His-tagged proteins can be purified and detected easily because the string of histidine residues binds to several types of immobilized metal ions, including nickel, cobalt and copper, under specific buffer conditions. The His-tag antibody is a useful tool for monitoring of the His-tagged proteins, and recognizes His-tags placed at N-terminal, C-terminal, and internal regions of fusion proteins expressed in bacteria, insect, and mammalian cells.

Storage

Storage:

Store at -20°C. Avoid exposure to light. Stable for one year after shipment.

Storage Buffer:

PBS with 50% Glycerol, 0.05% Proclin300, 0.5% BSA, pH 7.3.

Aliquoting is unnecessary for -20°C storage

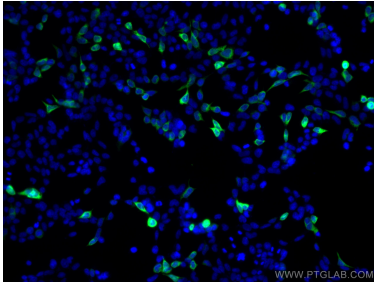
For technical support and original validation data for this product please contact:

T: 1 (888) 4PTGLAB (1-888-478-4522) (toll free in USA), or 1(312) 455-8498 (outside USA)

E: proteintech@ptglab.com
W: ptglab.com

This product is exclusively available under Proteintech Group brand and is not available to purchase from any other manufacturer.

Selected Validation Data



Immunofluorescent analysis of (-20°C Ethanol) fixed Transfected HEK-293 cells using the CoraLite®488-conjugated version of this antibody, CL488-66005 (6^{His}, His-Tag antibody), at dilution of 1:100.