

For Research Use Only

# CoraLite®488-conjugated Beta Actin Monoclonal antibody



Catalog Number:CL488-66009

## Basic Information

<b>Catalog Number:</b> CL488-66009	<b>GenBank Accession Number:</b> NM_001101	<b>Purification Method:</b> Protein A purification
<b>Size:</b> 100UL, Concentration: 2000 µg/ml by 60 Bradford method using BSA as the standard;	<b>GeneID (NCBI):</b> actin, beta	<b>CloneNo.:</b> 2D4H5
<b>Source:</b> Mouse	<b>Full Name:</b> actin, beta	<b>Recommended Dilutions:</b> WB 1:2000-1:10000 IF 1:50-1:500
<b>Isotype:</b> IgG2b	<b>Calculated MW:</b> 42 kDa	<b>Excitation/Emission maxima wavelengths:</b> 488 nm/515 nm

## Applications

<b>Tested Applications:</b> FC, IF, WB, ELISA	<b>Positive Controls:</b>
<b>Species Specificity:</b> human, mouse, rat, hamster, zebrafish, monkey	<b>WB :</b> HepG2 cells, <b>IF :</b> HepG2 cells,

## Background Information

Actins are highly conserved globular proteins that are involved in various types of cell motility and are ubiquitously expressed in all eukaryotic cells. At least six isoforms of actins are known in mammals and other vertebrates: alpha (ACTC1, cardiac muscle 1), alpha 1 (ACTA1, skeletal muscle) and 2 (ACTA2, aortic smooth muscle), beta (ACTB), gamma 1 (ACTG1) and 2 (ACTG2, enteric smooth muscle). Beta and gamma 1 are two non-muscle actin proteins. Most actins consist of 376aa, while ACTG2 (rich in muscles) has 375aa and ACTG1(found in non-muscle cells) has only 374aa. Beta actin has been widely used as the internal control in RT-PCR and Western Blotting as a 42-kDa protein. However, the 41 kDa cleaved fragment of beta actin can be generated during apoptosis process. This antibody can recognize all the actins. The isotype of this antibody is IgG2b. And the antibody is CL488 (Ex/Em 488 nm/515 nm) conjugated.

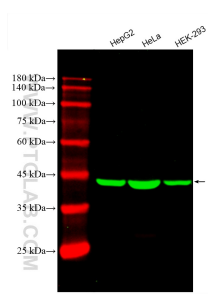
## Storage

**Storage:**  
Store at -20°C. Avoid exposure to light. Stable for one year after shipment.  
**Storage Buffer:**  
PBS with 50% Glycerol, 0.05% Proclin300, 0.5% BSA, pH 7.3.  
**Aliquoting is unnecessary for -20°C storage**

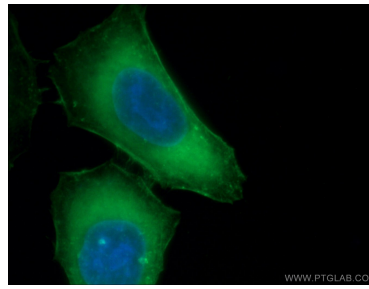
For technical support and original validation data for this product please contact:  
T: 1 (888) 4PTGLAB (1-888-478-4522) (toll free in USA), or 1(312) 455-8498 (outside USA)  
E: proteintech@ptglab.com  
W: ptglab.com

**This product is exclusively available under Proteintech Group brand and is not available to purchase from any other manufacturer.**

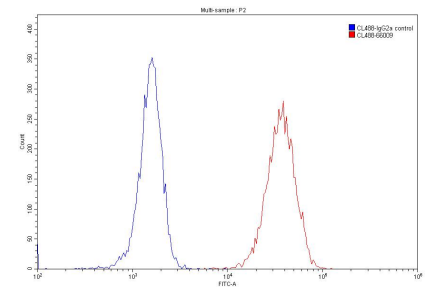
## Selected Validation Data



Various lysates were subjected to SDS PAGE followed by western blot with CL488-66009 (Beta Actin antibody) at dilution of 1:5000 incubated at room temperature for 1.5 hours.



Immunofluorescent analysis of (-20°C Ethanol) fixed HepG2 cells using CL488-66009 (beta Actin antibody) at dilution of 1:100.



1x10<sup>6</sup> HeLa cells were stained with 0.20ug beta Actin antibody (CL488-66009, red) and control antibody (blue). Fixed with 90% MeOH.