

For Research Use Only

# CoraLite®488-conjugated HLA class I ABC Monoclonal antibody



Catalog Number: **CL488-66013**

Featured Product

## Basic Information

<b>Catalog Number:</b> CL488-66013	<b>GenBank Accession Number:</b> BC003069	<b>Purification Method:</b> Protein A purification
<b>Size:</b> 100UL, Concentration: 1000 µg/ml by Nanodrop;	<b>GeneID (NCBI):</b> 3105	<b>CloneNo.:</b> 5C5B7
<b>Source:</b> Mouse	<b>Full Name:</b> major histocompatibility complex, class I, A	<b>Recommended Dilutions:</b> IF 1:50-1:500
<b>Isotype:</b> IgG2b	<b>Calculated MW:</b> 41 kDa	<b>Excitation/Emission maxima wavelengths:</b> 488 nm/515 nm
<b>Immunogen Catalog Number:</b> AG7488	<b>Observed MW:</b> 40-44 kDa	

## Applications

<b>Tested Applications:</b> FC, IF	<b>Positive Controls:</b> IF : human tonsillitis tissue,
<b>Species Specificity:</b> human, pig	

## Background Information

Human major histocompatibility complex (MHC) antigens, also referred to as human leukocyte antigens (HLA), are encoded by genes located on the short arm of chromosome 6 (6p21.3). There are two classes of HLA antigens: class I (HLA-A, B and C) and class II (HLA-D). This class I molecules are polymorphic membrane glycoproteins composed of a heavy (alpha) chain (44 kDa) which is encoded by a HLA class I gene (HLA-A, B or C), and β2-microglobulin light (beta) chain (12 kDa). They are involved in the presentation of foreign antigens to the immune system. (PMID: 667938; 3375250)

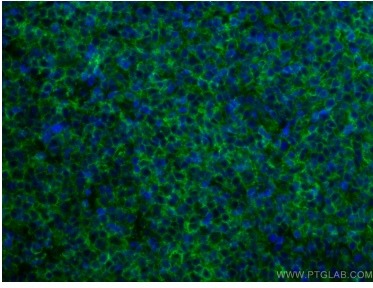
## Storage

**Storage:**  
Store at -20°C. Avoid exposure to light. Stable for one year after shipment.  
**Storage Buffer:**  
PBS with 50% Glycerol, 0.05% Proclin300, 0.5% BSA, pH 7.3.  
Aliquoting is unnecessary for -20°C storage

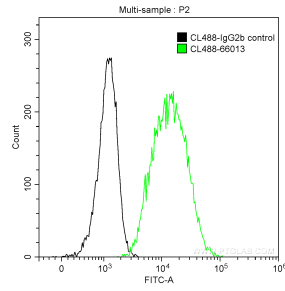
For technical support and original validation data for this product please contact:  
T: 1 (888) 4PTGLAB (1-888-478-4522) (toll free in USA), or 1(312) 455-8498 (outside USA)  
E: proteintech@ptglab.com  
W: ptglab.com

This product is exclusively available under Proteintech Group brand and is not available to purchase from any other manufacturer.

## Selected Validation Data



Immunofluorescent analysis of (4% PFA) fixed human tonsillitis tissue using CL488-66013 (HLA class I ABC antibody) at dilution of 1:50.



$1 \times 10^6$  Raji cells were intracellularly stained with 0.2 ug CoraLite®488 Anti-Human HLA class I ABC (CL488-66013, Clone:5C5B7) (green), or 0.2 ug isotype control (black). Cells were fixed with 90% MeOH.