

For Research Use Only

CoraLite®488-conjugated ASS1 Monoclonal antibody



Catalog Number: CL488-66036

Featured Product

Basic Information

Catalog Number:

CL488-66036

Size:

100UL, Concentration: 2000 µg/ml by 445

Bradford method using BSA as the standard;

Source:

Mouse

Isotype:

IgG1

Immunogen Catalog Number:

AG9314

GenBank Accession Number:

BC009243

GeneID (NCBI):

445

Full Name:

argininosuccinate synthetase 1

Calculated MW:

412 aa, 47 kDa

Observed MW:

40-45 kDa

Purification Method:

Protein G purification

CloneNo.:

1D1A11

Recommended Dilutions:

IF 1:50-1:500

Excitation/Emission maxima wavelengths:

488 nm/515 nm

Applications

Tested Applications:

IF, ELISA

Species Specificity:

human, pig, mouse, rat

Positive Controls:

IF : MCF-7 cells,

Background Information

ASS1 is a rate-limiting enzyme in the urea cycle. Citrullinemia type I is an autosomal recessive disorder that is caused by a deficiency of the urea cycle enzyme argininosuccinate synthetase (ASS1). Deficiency of ASS1 shows various clinical manifestations encompassing severely affected patients with fatal neonatal hyperammonemia as well as asymptomatic individuals with only a biochemical phenotype (PMID:19006241).

Storage

Storage:

Store at -20°C. Avoid exposure to light. Stable for one year after shipment.

Storage Buffer:

PBS with 50% Glycerol, 0.05% Proclin300, 0.5% BSA, pH 7.3.

Aliquoting is unnecessary for -20°C storage

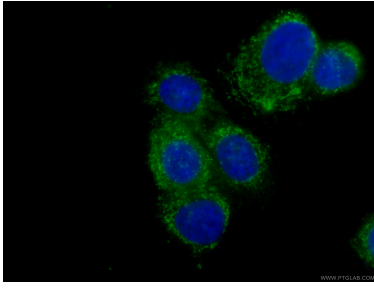
For technical support and original validation data for this product please contact:

T: 1 (888) 4PTGLAB (1-888-478-4522) (toll free in USA), or 1(312) 455-8498 (outside USA)

E: proteintech@ptglab.com
W: ptglab.com

This product is exclusively available under Proteintech Group brand and is not available to purchase from any other manufacturer.

Selected Validation Data



Immunofluorescent analysis of (4% PFA) fixed MCF-7 cells using CL488-66036 (ASS1 antibody) at dilution of 1:100.