

For Research Use Only

CoraLite®488-conjugated Caspase 8/p43/p18 Monoclonal antibody



Catalog Number: **CL488-66093**

Featured Product

Basic Information

Catalog Number: CL488-66093	GenBank Accession Number: BC028223	Purification Method: Protein A purification
Size: 100UL, Concentration: 2000 µg/ml by 841 Bradford method using BSA as the standard;	GeneID (NCBI): 841	CloneNo.: 2B9H8
Source: Mouse	Full Name: caspase 8, apoptosis-related cysteine peptidase	Recommended Dilutions: IF 1:50-1:500
Isotype: IgG2b	Calculated MW: 538 aa, 62 kDa	Excitation/Emission maxima wavelengths: 488 nm/515 nm
Immunogen Catalog Number: AG20524	Observed MW: 53-57 kDa, 32-45 kDa, 18 kDa	

Applications

Tested Applications: IF, ELISA	Positive Controls: IF : HeLa cells,
Species Specificity: human	

Background Information

Caspase 8, also named as MCH5, MACH, FLICE, and CAP4, belongs to the peptidase C14A family. It may participate in the GZMB apoptotic pathways and functions as an upstream regulator in a-bisabolol-induced apoptosis. Caspase 8 catalyzes an essential intermediate step in the ubiquitination and proteasome-mediated degradation of IRF3 (PMID:21816816). It may control diabetic embryopathy-associated apoptosis via regulation of the Bid-stimulated mitochondrion/caspase-9 pathway (PMID:19194987). Caspase 8 is expressed as nine isoforms by alternative splicing with the molecular mass from 26 kDa to 62 kDa. This antibody can recognize pro- and cleaved-caspase 8.

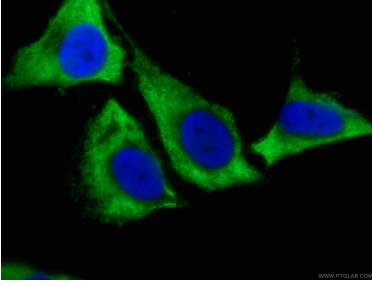
Storage

Storage:
Store at -20°C. Avoid exposure to light. Stable for one year after shipment.
Storage Buffer:
PBS with 50% Glycerol, 0.05% Proclin300, 0.5% BSA, pH 7.3.
Aliquoting is unnecessary for -20°C storage

For technical support and original validation data for this product please contact:
T: 1 (888) 4PTGLAB (1-888-478-4522) (toll free in USA), or 1(312) 455-8498 (outside USA)
E: proteintech@ptglab.com
W: ptglab.com

This product is exclusively available under Proteintech Group brand and is not available to purchase from any other manufacturer.

Selected Validation Data



Immunofluorescent analysis of (-20°C Ethanol) fixed HeLa cells using CL488-66093 (Caspase 8/p43/p18 antibody) at dilution of 1:100.