

# CoraLite488-conjugated Lamin B1 Monoclonal ANTIBODY

Catalog Number: CL488-66095

**Featured  
Product**

## Basic Information

**Catalog Number:**  
CL488-66095

**Size:**  
200 µg/ 100 µl

**Source:**  
Mouse

**Isotype:**  
IgG1

**Purification Method:**  
Protein G purification

**Immunogen Catalog Number:**  
AG20522

**GenBank Accession Number:**  
BC012295

**GeneID (NCBI):**  
4001

**Full Name:**  
lamin B1

**Calculated MW:**  
66 kDa

**Observed MW:**  
66-70 kDa

**Recommended Dilutions:**  
IF 1:50-1:500

**Excitation/Emission maxima wavelengths:**  
488 nm/515 nm

## Applications

**Tested Applications:**  
IF, ELISA

**Species Specificity:**  
human,mouse,rat

**Note: suggested antigen retrieval with TE buffer pH 9.0; (\*) Alternatively, antigen retrieval may be performed with citrate buffer pH 6.0**

**Positive Controls:**

IF : HepG2 cells;

## Background Information

Lamins are components of the nuclear lamina, a fibrous layer on the nucleoplasmic side of the inner nuclear membrane, which is thought to provide a framework for the nuclear envelope and may also interact with chromatin. The nuclear lamina consists of a two-dimensional matrix of proteins located next to the inner nuclear membrane. The lamin family of proteins make up the matrix and are highly conserved in evolution. During mitosis, the lamina matrix is reversibly disassembled as the lamin proteins are phosphorylated. Vertebrate lamins consist of two types, A and B. This gene encodes one of the two B type proteins, B1. This protein is not suitable for samples where the nuclear envelope has been removed. The antibody is conjugated with CL488, Ex/Em 488 nm/515 nm.

## Notable Publications

Author	Pubmed ID	Journal	Application

## Storage

**Storage:**

Store at -20°C. Stable for one year after shipment.

**Storage Buffer:**

PBS with 0.03% Proclin300, 50% glycerol, pH 7.3

Aliquoting is unnecessary for -20°C storage

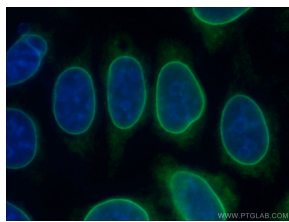
For technical support and original validation data for this product please contact:

T: 1 (888) 4PTGLAB (1-888-478-4522) (toll free in USA), or 1(312) 455-8498 (outside USA)

 E: [proteintech@ptglab.com](mailto:proteintech@ptglab.com)  
 W: [ptglab.com](http://ptglab.com)

This product is exclusively available under Proteintech Group brand and is not available to purchase from any other manufacturer.

## Selected Validation Data



Immunofluorescent analysis of (-20°C Ethanol) fixed HepG2 cells using CL488-66095 (Lamin B1 antibody) at dilution of 1:100.