

For Research Use Only

CoraLite®488-conjugated AFM Monoclonal antibody



Catalog Number:CL488-66113

Basic Information

Catalog Number: CL488-66113	GenBank Accession Number: BC109020	Purification Method: Protein G purification
Size: 100UL, Concentration: 1000 µg/ml by 173 Nanodrop;	GeneID (NCBI): afamin	CloneNo.: 2G9F6
Source: Mouse	Full Name: afamin	Recommended Dilutions: IF 1:50-1:500
Isotype: IgG1	Calculated MW: 599 aa, 69 kDa	Excitation/Emission maxima wavelengths: 488 nm/515 nm
Immunogen Catalog Number: AG16866	Observed MW: 85 kDa	

Applications

Tested Applications: IF, ELISA	Positive Controls: IF : HeLa cells,
Species Specificity: human, mouse	

Background Information

AFM (Afamin) is a member of the albumin superfamily, which comprises albumin, vitamin D-binding protein, a-fetoprotein, and afamin. AFM is present in the plasma/serum, cerebrospinal fluid, and follicular fluid, and functions as a vitamin E-binding protein. Alterations of expression level of AFM have been linked to variety of diseases like cancer.

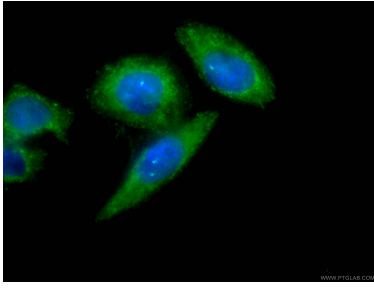
Storage

Storage:
Store at -20°C. Avoid exposure to light. Stable for one year after shipment.
Storage Buffer:
PBS with 50% Glycerol, 0.05% Proclin300, 0.5% BSA, pH 7.3.
Aliquoting is unnecessary for -20°C storage

For technical support and original validation data for this product please contact:
T: 1 (888) 4PTGLAB (1-888-478-4522) (toll free in USA), or 1(312) 455-8498 (outside USA)
E: proteintech@ptglab.com
W: ptglab.com

This product is exclusively available under Proteintech Group brand and is not available to purchase from any other manufacturer.

Selected Validation Data



Immunofluorescent analysis of (-20°C Ethanol) fixed HeLa cells using CL488-66113 (AFM antibody) at dilution of 1:100.