

For Research Use Only

CoraLite® Plus 488-conjugated S1 tag Monoclonal antibody

Catalog Number:CL488-66165



Basic Information

Catalog Number:

CL488-66165

GenBank Accession Number:

GeneID (NCBI):

7

Size:

100ul , Concentration: 1000 ug/ml by
Nanodrop;

Full Name:

S1 Tag

Source:

Mouse

Isotype:

IgG2b

Purification Method:

Protein A purification

CloneNo.:

1A9B5

Recommended Dilutions:

WB 1:500-1:1000

Excitation/Emission maxima
wavelengths:

493 nm / 522 nm

Applications

Tested Applications:

WB

Species Specificity:

recombinant protein

Positive Controls:

WB : Recombinant protein,

Background Information

S1 tag, with sequence NANNPDWDF, is derived from the hepatitis B virus preS1 region. S1 tag is widely used in various protein expression systems. This antibody can detect the over-expressed fusion proteins containing S1 epitope tag.

Storage

Storage:

Store at -20°C. Avoid exposure to light. Stable for one year after shipment.

Storage Buffer:

PBS with 50% glycerol, 0.05% Proclin300, 0.5% BSA, pH7.3

Aliquoting is unnecessary for -20°C storage

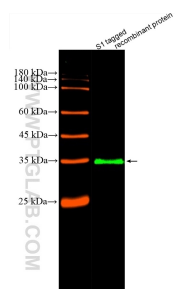
For technical support and original validation data for this product please contact:

T: 1 (888) 4PTGLAB (1-888-478-4522) (toll free
in USA), or 1(312) 455-8498 (outside USA)

E: proteintech@ptglab.com
W: ptglab.com

This product is exclusively available under Proteintech Group brand and is not available to purchase from any other manufacturer.

Selected Validation Data



S1 tagged protein lysate was subjected to SDS PAGE followed by western blot with CL488-66165 (S1 tag antibody) at dilution of 1:500 incubated at room temperature for 1.5 hours.