

For Research Use Only

CoraLite®488-conjugated ERK1/2 Monoclonal antibody



Catalog Number: CL488-66192

Basic Information

Catalog Number: CL488-66192	GenBank Accession Number: BC013992	Purification Method: Protein G purification
Size: 100ul , Concentration: 1000 µg/ml by Nanodrop and 2000 µg/ml by Bradford method using BSA as the standard;	GeneID (NCBI): 5595	CloneNo.: 4G8A11
Source: Mouse	Full Name: mitogen-activated protein kinase 3	Recommended Dilutions: IF 1:50-1:500
Isotype: IgG1	Calculated MW: 43 kDa	Excitation/Emission maxima wavelengths: 488 nm/515 nm
Immunogen Catalog Number: AG20350		

Applications

Tested Applications: IF	Positive Controls: IF : HeLa cells,
Species Specificity: human, mouse	

Background Information

ERK1 and ERK2 belongs to the protein kinase superfamily. It is involved in both the initiation and regulation of meiosis, mitosis, and postmitotic functions in differentiated cells by phosphorylating a number of transcription factors such as ELK-1. ERK1/2 catalyzed the reaction: ATP + a protein = ADP + a phosphoprotein. It is activated by tyrosine phosphorylation in response to INS and NGF. The antibody is conjugated with CL488, Ex/Em 488 nm/515 nm.

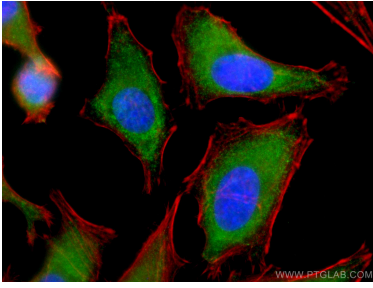
Storage

Storage:
Store at -20°C. Avoid exposure to light. Stable for one year after shipment.
Storage Buffer:
PBS with 0.02% sodium azide and 50% glycerol pH 7.3.
Aliquoting is unnecessary for -20°C storage

For technical support and original validation data for this product please contact:
T: 1 (888) 4PTGLAB (1-888-478-4522) (toll free in USA), or 1(312) 455-8498 (outside USA)
E: proteintech@ptglab.com
W: ptglab.com

This product is exclusively available under Proteintech Group brand and is not available to purchase from any other manufacturer.

Selected Validation Data



Immunofluorescent analysis of (-20°C Ethanol) fixed HeLa cells using CoraLite®488 ERK1/2 antibody (CL488-66192, Clone: 4G8A11) at dilution of 1:100, (CL594-Phalloidin, red).