

For Research Use Only

CoraLite®488-conjugated S100A10 Monoclonal antibody



Catalog Number:CL488-66227

Basic Information

Catalog Number:

CL488-66227

GenBank Accession Number:

BC015973

Purification Method:

Protein G purification

Size:

100ul , Concentration: 1000 µg/ml by
Nanodrop;

GeneID (NCBI):

6281

CloneNo.:

1B3F9

Source:

Mouse

Full Name:

S100 calcium binding protein A10

Recommended Dilutions:

IF 1:50-1:500

Isotype:

IgG1

Calculated MW:

11 kDa

Excitation/Emission maxima
wavelengths:

488 nm/515 nm

Immunogen Catalog Number:

AG23596

Applications

Tested Applications:

IF

Positive Controls:

IF : A431 cells,

Species Specificity:

human

Background Information

S100A10, also known as p11, is a member of the S100 family of small, EF hand containing dimeric proteins. S100 proteins are localized in the cytoplasm and/or nucleus of a wide range of cells, and involved in the regulation of a number of cellular processes such as cell cycle progression and differentiation. S100A10 is present on the surface of endothelial and other cells in a heterotetrameric complex with another Ca(2+)-binding protein, annexin II. S100A10 may function in exocytosis and endocytosis.

Storage

Storage:

Store at -20°C. Avoid exposure to light.

Storage Buffer:

PBS with 50% Glycerol, 0.05% Proclin300, 0.5% BSA, pH 7.3.

Aliquoting is unnecessary for -20°C storage

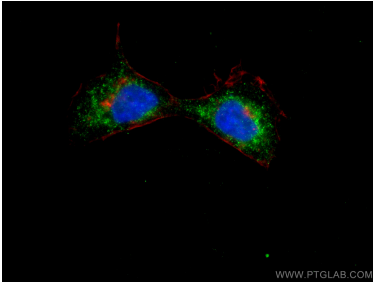
For technical support and original validation data for this product please contact:

T: 1 (888) 4PTGLAB (1-888-478-4522) (toll free
in USA), or 1(312) 455-8498 (outside USA)

E: proteintech@ptglab.com
W: ptglab.com

This product is exclusively available under Proteintech Group brand and is not available to purchase from any other manufacturer.

Selected Validation Data



Immunofluorescent analysis of (4% PFA) fixed A431 cells using CoraLite®@488 S100A10 antibody (CL488-66227, Clone: 1B3F9) at dilution of 1:200, CL594-Phalloidin (red).