

For Research Use Only

CoraLite®488-conjugated Cytochrome c Monoclonal antibody



Catalog Number: **CL488-66264**

Basic Information

Catalog Number: CL488-66264	GenBank Accession Number: BC009578	Purification Method: Protein A purification
Size: 100UL, Concentration: 2000 µg/ml by Bradford method using BSA as the standard;	GeneID (NCBI): 54205	CloneNo.: 2D8D11
Source: Mouse	Full Name: cytochrome c, somatic	Recommended Dilutions: IF 1:50-1:500
Isotype: IgG2a	Calculated MW: 12 kDa	Excitation/Emission maxima wavelengths: 488 nm/515 nm
Immunogen Catalog Number: AG24349		

Applications

Tested Applications: IF, ELISA	Positive Controls: IF : HepG2 cells,
Species Specificity: human, mouse, rat	

Background Information

Cytochrome c is a 12-15 kDa electron transporting protein located in the inner mitochondrial membrane. Upon apoptotic stimulation, cytochrome c can be released from mitochondria into cytoplasm, resulting in caspase-3 activation and apoptosis. Measurement of cytochrome c release from the mitochondria is useful for detection of the onset of apoptosis in cells. In addition, cytochrome c can also leave cells and be detectable in extra-cellular medium of apoptotic cells and serum of cancer patients. The level of serum cytochrome c may serve as a prognostic maker during cancer therapy.

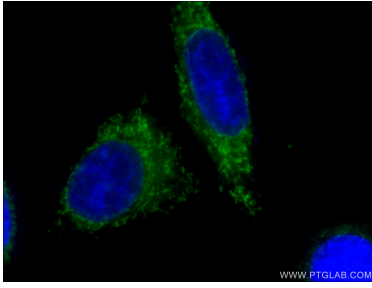
Storage

Storage:
Store at -20°C. Avoid exposure to light. Stable for one year after shipment.
Storage Buffer:
PBS with 0.02% sodium azide and 50% glycerol pH 7.3.
Aliquoting is unnecessary for -20°C storage

For technical support and original validation data for this product please contact:
T: 1 (888) 4PTGLAB (1-888-478-4522) (toll free in USA), or 1(312) 455-8498 (outside USA)
E: proteintech@ptglab.com
W: ptglab.com

This product is exclusively available under Proteintech Group brand and is not available to purchase from any other manufacturer.

Selected Validation Data



Immunofluorescent analysis of (4% PFA) fixed HepG2 cells using CL488-66264 (Cytochrome c antibody) at dilution of 1:50.