

For Research Use Only

# CoraLite® Plus 488-conjugated MCP-1/CCL2 Monoclonal antibody

Catalog Number: CL488-66272

Featured Product



## Basic Information

Catalog Number:

CL488-66272

Size:

100ul , Concentration: 1000 ug/ml by Nanodrop;

Source:

Mouse

Isotype:

IgG1

Immunogen Catalog Number:

AG24085

GenBank Accession Number:

NM-011333

GeneID (NCBI):

20296

Full Name:

chemokine (C-C motif) ligand 2

Observed MW:

26 kDa

Purification Method:

Protein G purification

CloneNo.:

1B9F7

Recommended Dilutions:

IF-P 1:50-1:500

Excitation/Emission maxima wavelengths:

493 nm / 522 nm

## Applications

Tested Applications:

IF-P

Species Specificity:

mouse

Positive Controls:

IF-P : mouse liver tissue,

## Background Information

Monocyte chemoattractant protein-1 (MCP-1/CCL2) is one of the key chemokines that regulate migration and infiltration of monocytes/macrophages. Both CCL2 and its receptor CCR2 have been demonstrated to be induced and involved in various diseases. Migration of monocytes from the blood stream across the vascular endothelium is required for routine immunological surveillance of tissues, as well as in response to inflammation.

## Storage

Storage:

Store at -20°C. Avoid exposure to light. Stable for one year after shipment.

Storage Buffer:

PBS with 50% Glycerol, 0.05% Proclin300, 0.5% BSA, pH 7.3.

Aliquoting is unnecessary for -20°C storage

For technical support and original validation data for this product please contact:

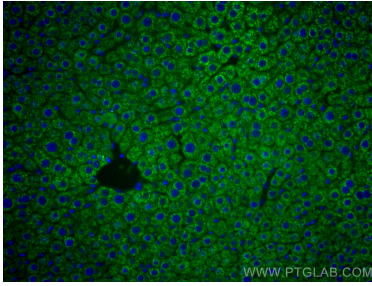
T: 1 (888) 4PTGLAB (1-888-478-4522) (toll free in USA), or 1(312) 455-8498 (outside USA)

E: [proteintech@ptglab.com](mailto:proteintech@ptglab.com)  
W: [ptglab.com](http://ptglab.com)

This product is exclusively available under Proteintech Group brand and is not available to purchase from any other manufacturer.

---

## Selected Validation Data



Immunofluorescent analysis of (4% PFA) fixed mouse liver tissue using CoraLite® Plus 488 Mcp1 antibody (CL488-66272, Clone: 1B9F7 ) at dilution of 1:200.