

For Research Use Only

CoraLite®488-conjugated OGDH Monoclonal antibody



Catalog Number:CL488-66285

Basic Information

Catalog Number: CL488-66285	GenBank Accession Number: BC004964	Purification Method: Protein A purification
Size: 100UL, Concentration: 1000 µg/ml by 4967 Nanodrop;	GeneID (NCBI): 4967	CloneNo.: 1H7A2
Source: Mouse	Full Name: oxoglutarate (alpha-ketoglutarate) dehydrogenase (lipoamide)	Recommended Dilutions: IF 1:50-1:500
Isotype: IgG2b	Calculated MW: 116 kDa	Excitation/Emission maxima wavelengths: 488 nm/515 nm
Immunogen Catalog Number: AG7484	Observed MW: 116 kDa	

Applications

Tested Applications: IF, ELISA	Positive Controls: IF : HepG2 cells,
Species Specificity: human, rat	

Background Information

OGDH(2-oxoglutarate dehydrogenase, mitochondrial) is also named as OGDC-E1and belongs to the alpha-ketoglutarate dehydrogenase family. It is one of the three enzymatic components of 2-oxoglutarate dehydrogenase complex,which catalyzes the overall conversion of 2-oxoglutarate to succinyl-CoA and CO2. This protein has 3 isoforms produced by alternative splicing.

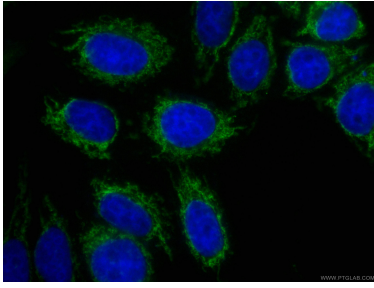
Storage

Storage:
Store at -20°C. Avoid exposure to light. Stable for one year after shipment.
Storage Buffer:
PBS with 50% Glycerol, 0.05% Proclin300, 0.5% BSA, pH 7.3.
Aliquoting is unnecessary for -20°C storage

For technical support and original validation data for this product please contact:
T: 1 (888) 4PTGLAB (1-888-478-4522) (toll free in USA), or 1(312) 455-8498 (outside USA)
E: proteintech@ptglab.com
W: ptglab.com

This product is exclusively available under Proteintech Group brand and is not available to purchase from any other manufacturer.

Selected Validation Data



Immunofluorescent analysis of (4% PFA) fixed HepG2 cells using CL488-66285 (OGDH antibody) at dilution of 1:100.