

For Research Use Only

CoraLite®488-conjugated MYL3 Monoclonal antibody



Catalog Number: CL488-66286

Basic Information

Catalog Number: CL488-66286	GenBank Accession Number: BC009790	Purification Method: Protein G purification
Size: 100UL, Concentration: 1000 µg/ml by Nanodrop;	GeneID (NCBI): 4634	CloneNo.: 2E4B2
Source: Mouse	Full Name: myosin, light chain 3, alkali; ventricular, skeletal, slow	Recommended Dilutions: IF 1:50-1:500
Isotype: IgG1	Calculated MW: 22 kDa	Excitation/Emission maxima wavelengths: 488 nm/515 nm
Immunogen Catalog Number: AG24535	Observed MW: 22-25 kDa	

Applications

Tested Applications: IF	Positive Controls: IF : C2C12 cells, mouse skeletal muscle tissue
Species Specificity: human, rat, mouse, pig	

Background Information

MYL3, also named as MLC1v, is an essential light chain of myosin that is associated with muscle contraction. It is expressed in ventricular and slow skeletal muscle. MYL3 may serve as a target for caspase-3 in dying cardiomyocytes. Mutations of MYL3 gene cause hypertrophic cardiomyopathy. MYL3 has been identified as potential serum biomarker for drug induced myotoxicity. Great increase in MYL3 serum concentration has been observed in rats with cardiac and skeletal muscle injury. (PMID:21685905)

Storage

Storage:
Store at -20°C. Avoid exposure to light. Stable for one year after shipment.
Storage Buffer:
PBS with 50% Glycerol, 0.05% Proclin300, 0.5% BSA, pH 7.3.
Aliquoting is unnecessary for -20°C storage

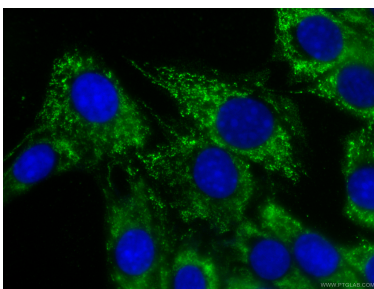
For technical support and original validation data for this product please contact:

T: 1 (888) 4PTGLAB (1-888-478-4522) (toll free in USA), or 1(312) 455-8498 (outside USA)

E: proteintech@ptglab.com
W: ptglab.com

This product is exclusively available under Proteintech Group brand and is not available to purchase from any other manufacturer.

Selected Validation Data



Immunofluorescent analysis of (-20°C Ethanol) fixed C2C12 cells using CL488-66286 (MYL3 antibody) at dilution of 1:100.