

For Research Use Only

# CoraLite488-conjugated Glutamine synthetase Monoclonal ANTIBODY



Catalog Number: **CL488-66323**

## Basic Information

Catalog Number:  
CL488-66323

Size:  
100 µg/ 100 µl

Source:  
Mouse

Isotype:  
IgG1

Purification Method:  
Protein G purification

Immunogen Catalog Number:  
AG6309

GenBank Accession Number:  
BC011700

GeneID (NCBI):  
2752

Full Name:  
glutamate-ammonia ligase (glutamine synthetase)

Calculated MW:  
374aa,42 kDa

Observed MW:

Recommended Dilutions:  
IF 1:50-1:500

Excitation/Emission maxima wavelengths:  
488 nm/515 nm

## Applications

Tested Applications:  
IF, ELISA

Species Specificity:  
Human

Positive Controls:

IF : mouse brain tissue;

## Background Information

GLUL(Glutamine synthetase) is also named as GS, GLNS and belongs to the glutamine synthetase family. This enzyme has 2 functions: it catalyzes the production of glutamine and 4-aminobutanoate (gamma-aminobutyric acid, GABA), the latter in a pyridoxal phosphate-independent manner. By similarity, Essential for proliferation of fetal skin fibroblasts(PMD:18662667). Defects in GLUL are the cause of congenital systemic glutamine deficiency (CSGD). Organismal glutamine production is augmented secondary to an increase in the activity of glutamine synthetase in the lung and skeletal muscle(PMD:7630137). The antibody is conjugated with CL488, Ex/Em 488 nm/515 nm.

## Notable Publications

Author	Pubmed ID	Journal	Application
--------	-----------	---------	-------------

## Storage

Storage:

Store at -20°C. Stable for one year after shipment.

Storage Buffer:

PBS with 0.1% sodium azide and 50% glycerol pH 7.3.

Aliquoting is unnecessary for -20°C storage

For technical support and original validation data for this

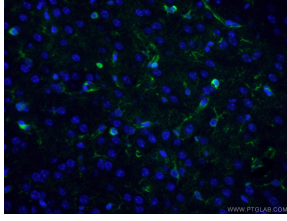
product please contact:

T: 1 (888) 4PTGLAB (1-888-478-4522) (toll free in USA), or 1(312) 455-8498 (outside USA)

E: [proteintech@ptglab.com](mailto:proteintech@ptglab.com)  
W: [ptglab.com](http://ptglab.com)

This product is exclusively available under Proteintech Group brand and is not available to purchase from any other manufacturer.

## Selected Validation Data



Immunofluorescent analysis of (4% PFA) fixed mouse brain tissue using CL488-66323 (Glutamine synthetase antibody) at dilution of 1:50 and N/A