

For Research Use Only

CoraLite®488-conjugated G6PD Monoclonal antibody



Catalog Number:CL488-66373

Featured Product

Basic Information

Catalog Number:

CL488-66373

GenBank Accession Number:

BC000337

Purification Method:

Protein A purification

Size:

100UL, Concentration: 2000 µg/ml by 2539

GeneID (NCBI):

2539

CloneNo.:

2A7B12

Bradford method using BSA as the standard;

Full Name:

glucose-6-phosphate dehydrogenase

Recommended Dilutions:

IF 1:50-1:500

Source:

Mouse

Calculated MW:

59 kDa

Excitation/Emission maxima wavelengths:

488 nm/515 nm

Isotype:

IgG2a

Immunogen Catalog Number:

AG21862

Applications

Tested Applications:

FC, IF, ELISA

Positive Controls:

IF : HeLa cells,

Species Specificity:

human, mouse

Background Information

G6PD(Glucose-6-phosphate 1-dehydrogenase) belongs to the glucose-6-phosphate dehydrogenase family. It is a housekeeping enzyme encoded in mammals by an X-linked gene. G6PD has important functions in intermediary metabolism because it catalyzes the first step in the pentose phosphate pathway and provides reductive potential in the form of NADPH.(PMID:7489710). This protein has 3 isoforms produced by alternative splicing.

Storage

Storage:

Store at -20°C. Avoid exposure to light. Stable for one year after shipment.

Storage Buffer:

PBS with 0.02% sodium azide and 50% glycerol pH 7.3.

Aliquoting is unnecessary for -20°C storage

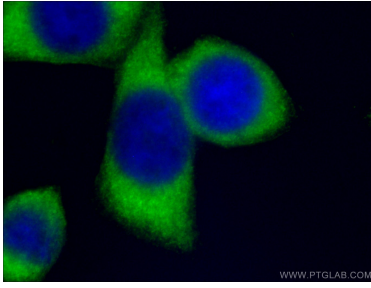
For technical support and original validation data for this product please contact:

T: 1 (888) 4PTGLAB (1-888-478-4522) (toll free in USA), or 1(312) 455-8498 (outside USA)

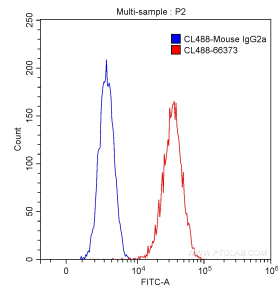
E: proteintech@ptglab.com
W: ptglab.com

This product is exclusively available under Proteintech Group brand and is not available to purchase from any other manufacturer.

Selected Validation Data



Immunofluorescent analysis of (-20°C Ethanol) fixed HeLa cells using CL488-66373 (G6PD antibody) at dilution of 1:50.



1X10⁶ HeLa cells were surface stained with 0.50 ug/test CoraLite® 488-conjugated Anti-Human G6PD (CL488-66373, Clone:2A7B12) (red) or 0.50 ug control antibody (blue). Fixed with 90% MeOH.