

For Research Use Only

CoraLite488-conjugated TUBB3-specific Monoclonal ANTIBODY

Catalog Number: ~~CL488-66375~~

Basic Information

Catalog Number:
CL488-66375

Size:
200 µg/ 100 µl

Source:
Mouse

Isotype:
IgG1

Purification Method:
Protein G purification

Immunogen Catalog Number:

GenBank Accession Number:
NM_001197181

GeneID (NCBI):
10381

Full Name:
tubulin, beta 3

Calculated MW:
55

Observed MW:

Recommended Dilutions:
IF 1:50-1:500

Excitation/Emission maxima wavelengths:
488 nm/515 nm

Applications

Tested Applications:
IF, ELISA

Species Specificity:
human, mouse, rat

Positive Controls:

IF : mouse brain tissue;

Background Information

TUBB3, the class III β tubulin or Tuj1, is selectively expressed in testis and neurons of the central and peripheral nervous system. It has been widely used as a marker for neurons. Aberrant expression of TUBB3 has also been found in various tumors of non-neural origin and can be used as a biomarker for cancer aggressiveness and a marker for the tendency to respond poorly to chemotherapy. This antibody is specific to TUBB3 but not cross-react with other tubulin isoforms. And the antibody is conjugated with CL488, Ex/Em 488 nm/515 nm.

Notable Publications

Author	Pubmed ID	Journal	Application
--------	-----------	---------	-------------

Storage

Storage:

Store at -20°C. Stable for one year after shipment.

Storage Buffer:

Sterile PBS.

Aliquoting is unnecessary for -20°C storage

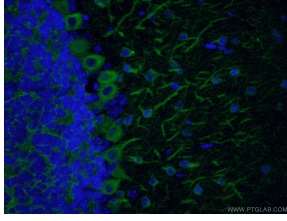
For technical support and original validation data for this product please contact:

T: 1 (888) 4PTGLAB (1-888-478-4522) (toll free in USA), or 1(312) 455-8498 (outside USA)

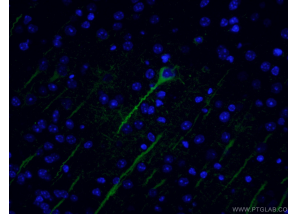
E: proteintech@ptglab.com
W: ptglab.com

This product is exclusively available under Proteintech Group brand and is not available to purchase from any other manufacturer.

Selected Validation Data



Immunofluorescent analysis of (4% PFA) fixed mouse brain tissue using CL488-66375 (TUBB3-specific antibody) at dilution of 1:50.



Immunofluorescent analysis of (4% PFA) fixed mouse brain tissue using CL488-66375 (TUBB3-specific antibody) at dilution of 1:50.