

For Research Use Only

CoraLite® Plus 488-conjugated SOX2 Monoclonal antibody

Catalog Number: CL488-66411

Featured Product



Basic Information

Catalog Number:

CL488-66411

Size:

100ul , Concentration: 1000 ug/ml by Nanodrop;

Source:

Mouse

Isotype:

IgG1

Immunogen Catalog Number:

AG13635

GenBank Accession Number:

BC013923

GeneID (NCBI):

6657

UNIPROT ID:

P48431

Full Name:

SRY (sex determining region Y)-box 2

Calculated MW:

34 kDa

Observed MW:

34-40 kDa

Purification Method:

Protein G purification

CloneNo.:

4B9B10

Recommended Dilutions:

IF-P: 1:50-1:500

Excitation/Emission maxima

wavelengths:

493 nm / 522 nm

Applications

Tested Applications:

IF-P

Species Specificity:

human, pig, mouse

Positive Controls:

IF-P : mouse brain tissue,

Background Information

Sox2, also known as SRY (sex determining region Y)-box 2, is a transcription factor essential for maintaining self-renewal of undifferentiated ES cells and is one of the key transcription factors used to reprogram mouse and human fibroblasts to a pluripotent state. Sox2 expressed in undifferentiated pluripotent stem cells and germ cells during development. This antibody is raised against an internal region of human SOX2. And the antibody is conjugated with CL488, Ex/Em 488 nm/515 nm.

Storage

Storage:

Store at -20°C. Avoid exposure to light. Stable for one year after shipment.

Storage Buffer:

PBS with 50% glycerol, 0.05% Proclin300, 0.5% BSA, pH7.3

Aliquoting is unnecessary for -20°C storage

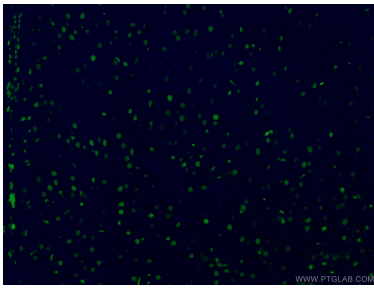
For technical support and original validation data for this product please contact:

T: 1 (888) 4PTGLAB (1-888-478-4522) (toll free in USA), or 1(312) 455-8498 (outside USA)

E: proteintech@ptglab.com
W: ptglab.com

This product is exclusively available under Proteintech Group brand and is not available to purchase from any other manufacturer.

Selected Validation Data



Immunofluorescent analysis of (4% PFA) fixed mouse brain tissue using CL488-66411 (SOX2 antibody) at dilution of 1:50.