

For Research Use Only

# CoraLite® Plus 488-conjugated LAP3 Monoclonal antibody

Catalog Number:CL488-66417



## Basic Information

Catalog Number:

CL488-66417

Size:

100ul , Concentration: 1000 ug/ml by  
Nanodrop;

Source:

Mouse

Isotype:

IgG1

Immunogen Catalog Number:

AG6300

GenBank Accession Number:

BC065564

GeneID (NCBI):

51056

UNIPROT ID:

P28838

Full Name:

leucine aminopeptidase 3

Calculated MW:

56 kDa

Observed MW:

56 kDa

Purification Method:

Protein G purification

CloneNo.:

1B11B8

Recommended Dilutions:

IF/ICC 1:50-1:500

Excitation/Emission maxima  
wavelengths:

493 nm / 522 nm

## Applications

Tested Applications:

IF/ICC

Species Specificity:

human, mouse, rat, pig

Positive Controls:

IF/ICC : HeLa cells,

## Background Information

LAP3(Leucine aminopeptidase 3) is also named as LAPEP, PEPS(peptidase S) and belongs to the peptidase M17 family. It can catalyzes the removal of unsubstituted N-terminal amino-acids from various peptides and be presumably involved in the processing and regular turnover of intracellular proteins. PEPS is found in a wide variety of tissues and cultured cells but not in red cells and skin. The enzyme can utilize several di-, tri-, and tetrapeptides as substrates and is the slowest migrating of the peptidases after electrophoresis.(PMID:689684). LAP3 has two isoform with MW of 52 and 56 kDa.

## Storage

Storage:

Store at -20°C. Avoid exposure to light. Stable for one year after shipment.

Storage Buffer:

PBS with 50% Glycerol, 0.05% Proclin300, 0.5% BSA, pH 7.3.

Aliquoting is unnecessary for -20°C storage

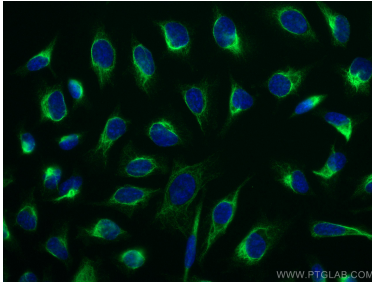
For technical support and original validation data for this product please contact:

T: 1 (888) 4PTGLAB (1-888-478-4522) (toll free  
in USA), or 1(312) 455-8498 (outside USA)

E: [proteintech@ptglab.com](mailto:proteintech@ptglab.com)  
W: [ptglab.com](http://ptglab.com)

This product is exclusively available under Proteintech Group brand and is not available to purchase from any other manufacturer.

## Selected Validation Data



Immunofluorescent analysis of (-20°C Methanol) fixed HeLa cells using Coralite® 488 LAP3 antibody (CL488-66417, Clone: 1B11B8) at dilution of 1:100.