

For Research Use Only

# CoraLite® Plus 488-conjugated CGGBP1 Monoclonal antibody

Catalog Number:CL488-66524



## Basic Information

<b>Catalog Number:</b> CL488-66524	<b>GenBank Accession Number:</b> BC005222	<b>Purification Method:</b> Protein G purification
<b>Size:</b> 100ul , Concentration: 1000 ug/ml by Nanodrop;	<b>GeneID (NCBI):</b> 8545	<b>CloneNo.:</b> 2F5G9
<b>Source:</b> Mouse	<b>UNIPROT ID:</b> Q9UFW8	<b>Excitation/Emission maxima wavelengths:</b> 493 nm / 522 nm
<b>Isotype:</b> IgG1	<b>Full Name:</b> CGG triplet repeat binding protein 1	
<b>Immunogen Catalog Number:</b> AG1129	<b>Calculated MW:</b> 19 kDa	
	<b>Observed MW:</b> 19 kDa	

## Applications

**Tested Applications:**  
FC (Intra)

**Species Specificity:**  
Human, Rat, mouse

## Background Information

CGGBP1, also named as CGGBP, is a 20 kDa CGG-binding protein. It binds to nonmethylated 5'-d(CGG)(n)-3' trinucleotide repeats in the FMR1 promoter. CGGBP1 may play a role in regulating FMR1 promoter. It is a bona fide midbody protein required for normal abscission and mitosis in general.(PMID:20832400)

## Storage

**Storage:**  
Store at -20°C. Avoid exposure to light. Stable for one year after shipment.

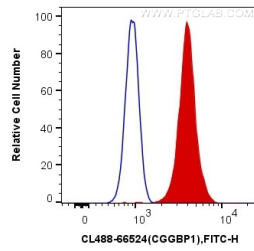
**Storage Buffer:**  
PBS with 50% Glycerol, 0.05% Proclin300, 0.5% BSA, pH 7.3.

**Aliquoting is unnecessary for -20°C storage**

For technical support and original validation data for this product please contact:  
T: 1 (888) 4PTGLAB (1-888-478-4522) (toll free in USA), or 1(312) 455-8498 (outside USA)  
E: [proteintech@ptglab.com](mailto:proteintech@ptglab.com)  
W: [ptglab.com](http://ptglab.com)

This product is exclusively available under Proteintech Group brand and is not available to purchase from any other manufacturer.

## Selected Validation Data



1X10<sup>6</sup> HeLa cells were intracellularly stained with 0.4 ug CoraLite® Plus 488 Anti-Human CGGBP1 (CL488-66524, Clone:2F5G9) (red), or 0.4 ug Control Antibody. Cells were fixed and permeabilized with Transcription Factor Staining Buffer Kit (PF00011).