

For Research Use Only

CoraLite®488-conjugated SDHA Monoclonal antibody



Catalog Number:CL488-66588

Basic Information

Catalog Number: CL488-66588	GenBank Accession Number: BC001380	Purification Method: Protein G purification
Size: 100UL, Concentration: 810 µg/ml by Nanodrop;	GeneID (NCBI): 6389	CloneNo.: 5E10G12
Source: Mouse	Full Name: succinate dehydrogenase complex, subunit A, flavoprotein (Fp)	Recommended Dilutions: IF 1:50-1:500
Isotype: IgG1	Calculated MW: 73 kDa	Excitation/Emission maxima wavelengths: 488 nm/515 nm
Immunogen Catalog Number: AG7023	Observed MW: 62-73 kDa	

Applications

Tested Applications: IF, ELISA	Positive Controls: IF : HepG2 cells,
Species Specificity: Human, Mouse, Rat	

Background Information

SDHA, also named as SDH2, SDHF and Fp, belongs to the FAD-dependent oxidoreductase 2 family and FRD/SDH subfamily. SDHA is the flavoprotein subunit of succinate dehydrogenase (SDH) that is involved in complex II of the mitochondrial electron transport chain and is responsible for transferring electrons from succinate to ubiquinone (coenzyme Q). SDHA has 3 isoforms with the molecular mass of 73, 67 and 57 kDa, and the N-terminal (~5 kDa) can be removed in mature form. It can be detected a band of 68 kDa in cutaneous melanoma(PMID:21698147). SDHA may act as a tumor suppressor.

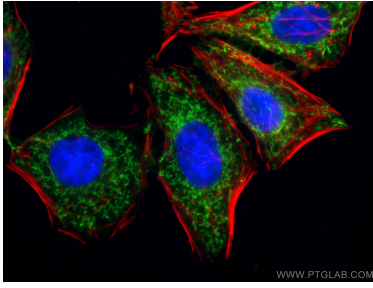
Storage

Storage:
Store at -20°C. Avoid exposure to light. Stable for one year after shipment.
Storage Buffer:
PBS with 50% Glycerol, 0.05% Proclin300, 0.5% BSA, pH 7.3.
Aliquoting is unnecessary for -20°C storage

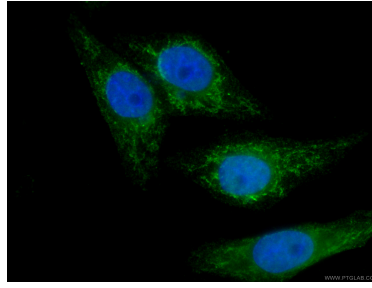
For technical support and original validation data for this product please contact:
T: 1 (888) 4PTGLAB (1-888-478-4522) (toll free in USA), or 1(312) 455-8498 (outside USA) E: proteintech@ptglab.com W: ptglab.com

This product is exclusively available under Proteintech Group brand and is not available to purchase from any other manufacturer.

Selected Validation Data



Immunofluorescent analysis of (4% PFA) fixed HepG2 cells using CoraLite®488-conjugated SDHA antibody (CL488-66588, Clone: 5E10G12) at dilution of 1:100. Red: CL594-Phalloidin stains F-Actin; Blue: DAPI.



Immunofluorescent analysis of (4% PFA) fixed HepG2 cells using CL488-66588 (SDHA antibody) at dilution of 1:100.