

For Research Use Only

CoraLite® Plus 488-conjugated C5 Monoclonal antibody

Catalog Number:CL488-66634



Basic Information

Catalog Number:

CL488-66634

Size:

100ul , Concentration: 1000 ug/ml by 727

Nanodrop;

Source:

Mouse

Isotype:

IgG2a

Immunogen Catalog Number:

AG17882

GenBank Accession Number:

BC113740

GeneID (NCBI):

727

UNIPROT ID:

P01031

Full Name:

complement component 5

Calculated MW:

1676 aa, 188 kDa

Observed MW:

115 kDa

Purification Method:

Protein A purification

CloneNo.:

2G8C9

Recommended Dilutions:

IF/ICC 1:50-1:500

Excitation/Emission maxima

wavelengths:

493 nm / 522 nm

Applications

Tested Applications:

IF/ICC, FC (Intra)

Species Specificity:

human

Positive Controls:

IF/ICC : HepG2 cells,

Storage

Storage:

Store at -20°C. Avoid exposure to light. Stable for one year after shipment.

Storage Buffer:

PBS with 50% Glycerol, 0.05% Proclin300, 0.5% BSA, pH 7.3.

Aliquoting is unnecessary for -20°C storage

For technical support and original validation data for this product please contact:

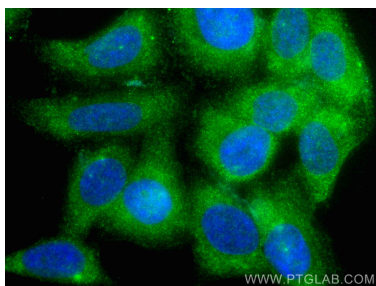
T: 1 (888) 4PTGLAB (1-888-478-4522) (toll free in USA), or 1(312) 455-8498 (outside USA)

E: proteintech@ptglab.com

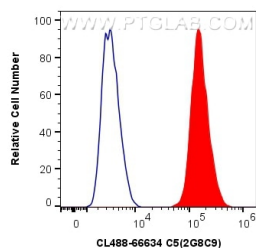
W: ptglab.com

This product is exclusively available under Proteintech Group brand and is not available to purchase from any other manufacturer.

Selected Validation Data



Immunofluorescent analysis of (-20°C Methanol) fixed HepG2 cells using CoraLite® Plus 488 C5 antibody (CL488-66634, Clone: 2G8C9) at dilution of 1:200.



1X10⁶ HepG2 cells were intracellularly stained with 0.8 ug CoraLite® Plus 488 Anti-Human C5 (CL488-66634, Clone:2G8C9) (red), or 0.8 ug CoraLite® Plus 488 Mouse IgG2a Isotype Control (C1.18.4) (CL488-65208, Clone: C1.18.4) (blue). Cells were fixed with 4% PFA and permeabilized with Flow Cytometry Perm Buffer (PF00011-C).