

For Research Use Only

CoraLite®488-conjugated FIS1 Monoclonal antibody



Catalog Number:CL488-66635

Basic Information

Catalog Number: CL488-66635	GenBank Accession Number: BC009428	Purification Method: Protein G purification
Size: 100UL, Concentration: 2000 µg/ml by Bradford method using BSA as the standard;	GeneID (NCBI): 51024	CloneNo.: 2F10E1
Source: Mouse	Full Name: fission 1 (mitochondrial outer membrane) homolog (S. cerevisiae)	Recommended Dilutions: IF 1:50-1:500
Isotype: IgG1	Calculated MW: 17 kDa	Excitation/Emission maxima wavelengths: 488 nm/515 nm
Immunogen Catalog Number: AG1409	Observed MW: 15 kDa	

Applications

Tested Applications: IF, ELISA	Positive Controls: IF : HepG2 cells,
Species Specificity: Human	

Background Information

Fis1 (fission 1) is an integral mitochondrial outer membrane protein that participates in mitochondrial fission by interacting with dynamin-related protein 1 (Drp1). Excessive mitochondrial fission is associated with the pathology of a number of neurodegenerative or neurodevelopmental diseases. Increased expression of Fis1 has been found in Huntington's disease (HD)-affected brain, Alzheimer's disease (AD) patients, and autism spectrum disorder. (21257639, 21459773, 23333625)

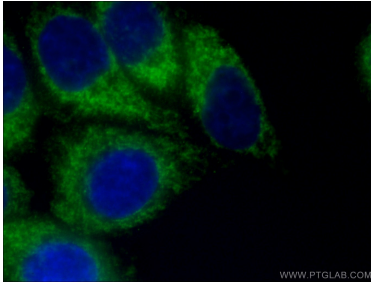
Storage

Storage:
Store at -20°C. Avoid exposure to light. Stable for one year after shipment.
Storage Buffer:
PBS with 50% Glycerol, 0.05% Proclin300, 0.5% BSA, pH 7.3.
Aliquoting is unnecessary for -20°C storage

For technical support and original validation data for this product please contact:
T: 1 (888) 4PTGLAB (1-888-478-4522) (toll free in USA), or 1(312) 455-8498 (outside USA)
E: proteintech@ptglab.com
W: ptglab.com

This product is exclusively available under Proteintech Group brand and is not available to purchase from any other manufacturer.

Selected Validation Data



Immunofluorescent analysis of (4% PFA) fixed HepG2 cells using CL488-66635 (FIS1 antibody) at dilution of 1:50 .