

For Research Use Only

CoraLite® Plus 488-conjugated TLR2 Monoclonal antibody

Catalog Number: CL488-66645

Featured Product



Basic Information

Catalog Number:

CL488-66645

Size:

100ul , Concentration: 1000 ug/ml by Nanodrop;

Source:

Mouse

Isotype:

IgG2a

Immunogen Catalog Number:

AG25626

GenBank Accession Number:

BC033756

GeneID (NCBI):

7097

UNIPROT ID:

O60603

Full Name:

toll-like receptor 2

Calculated MW:

784 aa, 90 kDa

Observed MW:

90-100 kDa

Purification Method:

Protein A purification

CloneNo.:

1C1D3

Recommended Dilutions:

IF/ICC 1:50-1:500

Excitation/Emission maxima wavelengths:

493 nm / 522 nm

Applications

Tested Applications:

IF/ICC

Species Specificity:

Human

Positive Controls:

IF/ICC : THP-1 cells,

Background Information

TLR2, also known as CD282, is a member of the Toll-like receptor (TLR) family. TLR receptors are type I integral transmembrane glycoproteins which play a fundamental role in pathogen recognition and activation of innate immunity. TLR2 is expressed by immune cells including monocytes/macrophages, polymorphonuclear leukocytes (PMLs) and dendritic cells, and is also expressed by some non-immune cells including endothelial and epithelial cells (PMID: 21428911; 22566960). TLR2 forms heterodimers with TLR1 and TLR6, which is the initial step in a cascade of events leading to significant innate immune responses, development of adaptive immunity to pathogens and protection from immune sequelae related to infection with these pathogens (PMID: 22566960).

Storage

Storage:

Store at -20°C. Avoid exposure to light. Stable for one year after shipment.

Storage Buffer:

PBS with 50% Glycerol, 0.05% Proclin300, 0.5% BSA, pH 7.3.

Aliquoting is unnecessary for -20°C storage

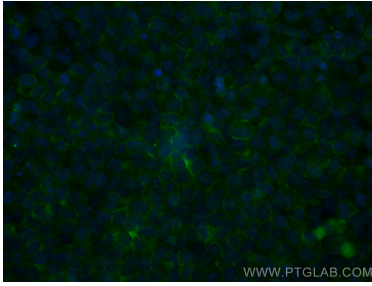
For technical support and original validation data for this product please contact:

T: 1 (888) 4PTGLAB (1-888-478-4522) (toll free in USA), or 1(312) 455-8498 (outside USA)

E: proteintech@ptglab.com
W: ptglab.com

This product is exclusively available under Proteintech Group brand and is not available to purchase from any other manufacturer.

Selected Validation Data



Immunofluorescent analysis of (4% PFA) fixed THP-1 cells using CoraLite® Plus 488 TLR2 antibody (CL488-66645, Clone: 1C1D3) at dilution of 1:100.