

For Research Use Only

CoraLite® Plus 488-conjugated FKBP8 Monoclonal antibody

Catalog Number: CL488-66690



Basic Information

Catalog Number: CL488-66690	GenBank Accession Number: BC009966	Purification Method: Protein G purification
Size: 100ul , Concentration: 1000 ug/ml by Nanodrop;	GeneID (NCBI): 23770	CloneNo.: 1C1G12
Source: Mouse	UNIPROT ID: Q14318	Recommended Dilutions: IF/ICC 1:50-1:500
Isotype: IgG1	Full Name: FK506 binding protein 8, 38kDa	Excitation/Emission maxima wavelengths: 493 nm / 522 nm
Immunogen Catalog Number: AG1649	Calculated MW: 45 kDa	
	Observed MW: 53 kDa	

Applications

Tested Applications: IF/ICC, FC (Intra)	Positive Controls: IF/ICC : A431 cells,
Species Specificity: human, mouse	

Background Information

FK506 binding protein 8 (FKBP8), is a member of the immunophilin protein family, which play a role in immunoregulation and basic cellular processes involving protein folding and trafficking. FKBP8 does not seem to have PPIase/rotamase activity, which is different from other members of this family. The active form of FKBP8 may play a role in the regulation of apoptosis. FKBP8 has 3 isoforms produced by alternative splicing.

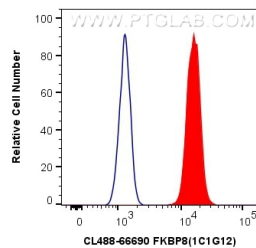
Storage

Storage:
Store at -20°C. Avoid exposure to light. Stable for one year after shipment.
Storage Buffer:
PBS with 50% Glycerol, 0.05% Proclin300, 0.5% BSA, pH 7.3.
Aliquoting is unnecessary for -20°C storage

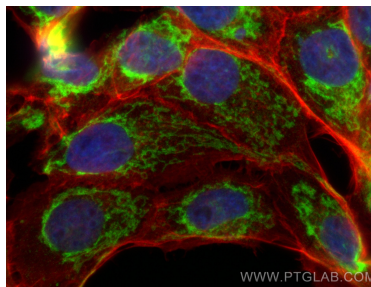
For technical support and original validation data for this product please contact:
T: 1 (888) 4PTGLAB (1-888-478-4522) (toll free in USA), or 1(312) 455-8498 (outside USA)
E: proteintech@ptglab.com
W: ptglab.com

This product is exclusively available under Proteintech Group brand and is not available to purchase from any other manufacturer.

Selected Validation Data



1X10⁶ A431 cells were intracellularly stained with 0.4 ug CoraLite® Plus 488 Anti-Human FKBP8 (CL488-66690, Clone:1C1G12) (red), or 0.4 ug Control Antibody. Cells were fixed with 4% PFA and permeabilized with Flow Cytometry Perm Buffer (PF00011-C).



Immunofluorescent analysis of (4% PFA) fixed A431 cells using CoraLite® Plus 488 FKBP8 antibody (CL488-66690, Clone: 1C1G12) at dilution of 1:200, CL594-phalloidin (red).