

For Research Use Only

CoraLite®488-conjugated RHOA Monoclonal antibody



Catalog Number: CL488-66733

Basic Information

Catalog Number: CL488-66733	GenBank Accession Number: BC005976	Purification Method: Protein G purification
Size: 100UL, Concentration: 1000 µg/ml by Nanodrop;	GeneID (NCBI): 387	CloneNo.: 1B3D7
Source: Mouse	Full Name: ras homolog gene family, member A	Recommended Dilutions: IF 1:50-1:500
Isotype: IgG1	Calculated MW: 22 kDa	Excitation/Emission maxima wavelengths: 488 nm/515 nm
Immunogen Catalog Number: AG1141	Observed MW: 22 kDa	

Applications

Tested Applications: IF, ELISA	Positive Controls: IF : HeLa cells,
Species Specificity: Human	

Background Information

RhoA is a member of the Rho family of small GTPases, which cycle between inactive GDP-bound and active GTP-bound states and function as molecular switches in signal transduction cascades. Rho proteins promote reorganization of the actin cytoskeleton and regulate cell shape, attachment, and motility. Overexpression of RhoA is associated with tumor cell proliferation and metastasis. RhoA signalling is critical to many cellular processes including migration, mechanotransduction, and is often disrupted in carcinogenesis.

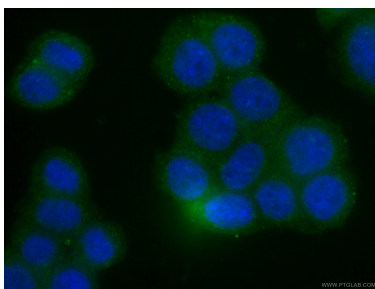
Storage

Storage:
Store at -20°C. Avoid exposure to light. Stable for one year after shipment.
Storage Buffer:
PBS with 50% Glycerol, 0.05% Proclin300, 0.5% BSA, pH 7.3.
Aliquoting is unnecessary for -20°C storage

For technical support and original validation data for this product please contact:
T: 1 (888) 4PTGLAB (1-888-478-4522) (toll free in USA), or 1(312) 455-8498 (outside USA)
E: proteintech@ptglab.com
W: ptglab.com

This product is exclusively available under Proteintech Group brand and is not available to purchase from any other manufacturer.

Selected Validation Data



Immunofluorescent analysis of (4% PFA) fixed HeLa cells using CL488-66733 (RHOA antibody) at dilution of 1:100.