

For Research Use Only

CoraLite®488-conjugated ARL13B Monoclonal antibody



Catalog Number:CL488-66739

Basic Information

Catalog Number: CL488-66739	GenBank Accession Number: BC094725	Purification Method: Protein A purification
Size: 100UL, Concentration: 2000 µg/ml by Bradford method using BSA as the standard;	GeneID (NCBI): 200894	CloneNo.: 1H6C3
Source: Mouse	Full Name: ADP-ribosylation factor-like 13B	Recommended Dilutions: IF 1:50-1:500
Isotype: IgG2a	Calculated MW: 48 kDa	Excitation/Emission maxima wavelengths: 488 nm/515 nm
Immunogen Catalog Number: AG12031	Observed MW: 60 kDa	

Applications

Tested Applications: IF, ELISA	Positive Controls: IF : MDCK cells,
Species Specificity: Human, dog	

Background Information

ARL13B, also named as ARL2L1, is a small ciliary G protein of the Ras superfamily. Localized in the cilia, it is required for cilium biogenesis and sonic hedgehog signaling. Defects in ARL13B are the cause of Joubert syndrome (JS) which is an autosomal recessive disorder characterized by a distinctive cerebellar malformation (PMID: 19906870). Arl13b is predicted to be a 48 kDa protein, and the 60 kDa band is likely to represent a modified form of Arl13b. ARL13B can be used to mark the cilia (PMID:22072986).

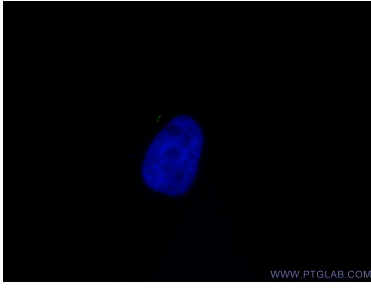
Storage

Storage:
Store at -20°C. Avoid exposure to light. Stable for one year after shipment.
Storage Buffer:
PBS with 0.1% sodium azide and 50% glycerol pH 7.3.
Aliquoting is unnecessary for -20°C storage

For technical support and original validation data for this product please contact:
T: 1 (888) 4PTGLAB (1-888-478-4522) (toll free in USA), or 1(312) 455-8498 (outside USA)
E: proteintech@ptglab.com
W: ptglab.com

This product is exclusively available under Proteintech Group brand and is not available to purchase from any other manufacturer.

Selected Validation Data



Immunofluorescent analysis of (4% PFA) fixed MDCK cells using CL488-66739 (ARL13B antibody) at dilution of 1:100.