

For Research Use Only

CoraLite®488-conjugated MFN1 Monoclonal antibody



Catalog Number:CL488-66776

Basic Information

Catalog Number: CL488-66776	GenBank Accession Number: BC040557	Purification Method: Protein A purification
Size: 100ul , Concentration: 1000 µg/ml by Nanodrop and 2000 µg/ml by Bradford method using BSA as the standard;	GeneID (NCBI): 55669	CloneNo.: 3F11C11
Source: Mouse	Full Name: mitofusin 1	Recommended Dilutions: IF 1:50-1:500
Isotype: IgG2a	Calculated MW: 741 aa, 84 kDa	Excitation/Emission maxima wavelengths: 488 nm/515 nm
Immunogen Catalog Number: AG4890	Observed MW: 84 kDa	

Applications

Tested Applications: FC, IF	Positive Controls: IF : HepG2 cells,
Species Specificity: Human	

Background Information

Mitofusin-1 (MFN1) is a mediator of mitochondrial fusion. This protein and mitofusin 2 are homologs of the Drosophila protein fuzzy onion (Fzo). Mitofusins are large predicted GTPases located in outer mitochondrial membrane. They are essential for outer membrane fusion by interacting with each other to facilitate mitochondrial targeting. The mitofusins are the first known protein mediator of mitochondrial fusion, and mediate developmentally regulated post-meiotic fusion of mitochondria. Mitofusin 1 and mitofusin 2 are ubiquitinated in a PINK1/parkin-dependent manner upon induction of mitophagy (PMID: 20871098).

Storage

Storage:
Store at -20°C. Avoid exposure to light. Stable for one year after shipment.
Storage Buffer:
PBS with 50% Glycerol, 0.05% Proclin300, 0.5% BSA, pH 7.3.
Aliquoting is unnecessary for -20°C storage

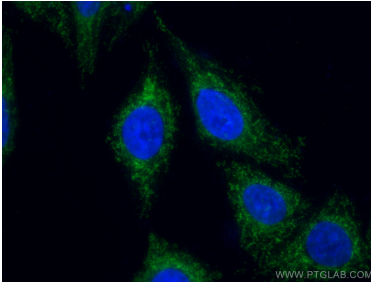
For technical support and original validation data for this product please contact:

T: 1 (888) 4PTGLAB (1-888-478-4522) (toll free
in USA), or 1(312) 455-8498 (outside USA)

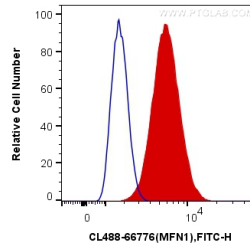
E: proteintech@ptglab.com
W: ptglab.com

This product is exclusively available under Proteintech Group brand and is not available to purchase from any other manufacturer.

Selected Validation Data



Immunofluorescent analysis of (4% PFA) fixed HepG2 cells using CoraLite®488-conjugated MFN1 antibody (CL488-66776, Clone: 3F11C11) at dilution of 1:100.



1X10⁶ HepG2 cells were intracellularly stained with 0.4 ug CoraLite®488 Anti-Human MFN1 (CL488-66776, Clone:3F11C11) (red), or 0.4 ug Mouse IgG2a Isotype Control (CL488-66360-2, Clone: K11A1B2A2) (blue). Cells were fixed with 4% PFA and permeabilized with Flow Cytometry Perm Buffer.