

For Research Use Only

# CoraLite® Plus 488-conjugated EEF1A2 Monoclonal antibody

Catalog Number: CL488-66806



## Basic Information

<b>Catalog Number:</b> CL488-66806	<b>GenBank Accession Number:</b> BC000432	<b>Purification Method:</b> Protein G purification
<b>Size:</b> 100ul , Concentration: 1000 ug/ml by Nanodrop;	<b>GeneID (NCBI):</b> 1917	<b>CloneNo.:</b> 4F3F4
<b>Source:</b> Mouse	<b>UNIPROT ID:</b> Q05639	<b>Recommended Dilutions:</b> IF/ICC: 1:50-1:500
<b>Isotype:</b> IgG1	<b>Full Name:</b> eukaryotic translation elongation factor 1 alpha 2	<b>FC (Intra):</b> 0.40 ug per 10 <sup>6</sup> cells in a 100 µl suspension
<b>Immunogen Catalog Number:</b> AG6875	<b>Calculated MW:</b> 50 kDa	<b>Excitation/Emission maxima wavelengths:</b> 493 nm / 522 nm
	<b>Observed MW:</b> 48-50 kDa	

## Applications

<b>Tested Applications:</b> IF/ICC, FC (Intra)	<b>Positive Controls:</b> IF/ICC : U2OS cells,
<b>Species Specificity:</b> human, mouse, rat, pig	<b>FC (Intra) :</b> U2OS cells,

## Background Information

eEF1A2 is one of two isoforms (eEF1A1 and eEF1A2) of eukaryotic elongation factor 1 alpha (eEF1A or eEF1α). The two isoforms share more than 90% sequence identity and have the similar function that being a protein translation factor involved in protein synthesis. Addition, eEF1A2 plays an important role in cell cycle regulation, heat-shock response, aging, posttranslational modifications, and signal transduction (PMID: 25905039). eEF1A2 is expressed in heart, brain tissue, diaphragm and skeletal muscle while eEF1A1 is expressed ubiquitously (PMID:14588074). And the eEF1A2 protein stimulates the phospholipid signaling and activates the Akt-dependent cell migration and actin remodeling that ultimately favors tumorigenesis. It is reported that eEF1A2 was related with kinds of cancers such as ovarian cancer, prostate cancer, pancreatic cancer, breast cancer and lung cancer (PMID:14588074; 24853801; 25744894; 25905039). An 48 kDa band has also been reported (PMID: 24285179).

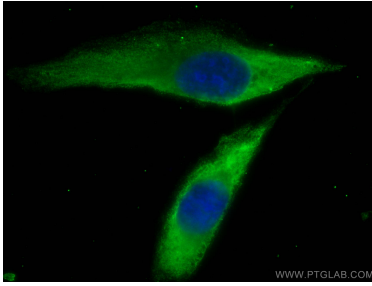
## Storage

**Storage:**  
Store at -20°C. Avoid exposure to light. Stable for one year after shipment.  
**Storage Buffer:**  
PBS with 50% glycerol, 0.05% Proclin300, 0.5% BSA, pH7.3  
**Aliquoting is unnecessary for -20°C storage**

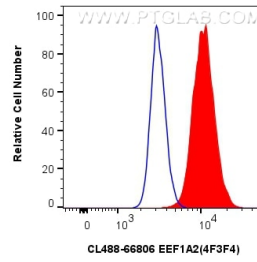
For technical support and original validation data for this product please contact:  
T: 1 (888) 4PTGLAB (1-888-478-4522) (toll free in USA), or 1(312) 455-8498 (outside USA)  
E: [proteintech@ptglab.com](mailto:proteintech@ptglab.com)  
W: [ptglab.com](http://ptglab.com)

This product is exclusively available under Proteintech Group brand and is not available to purchase from any other manufacturer.

## Selected Validation Data



Immunofluorescent analysis of (-20°C Methanol) fixed U2OS cells using Coralite® Plus 488 EEF1A2 antibody (CL488-66806, Clone: 4F3F4) at dilution of 1:200.



1x10<sup>6</sup> U2OS cells were intracellularly stained with 0.4 ug Coralite® Plus 488-conjugated EEF1A2 Monoclonal antibody (CL488-66806, Clone:4F3F4) (red), or 0.4 ug Coralite® Plus 488 Mouse IgG1 Isotype Control (1F8D3) (CL488-66360-1, Clone: 1F8D3) (blue). Cells were fixed with 4% PFA and permeabilized with Flow Cytometry Perm Buffer (PF00011-C).