

For Research Use Only

CoraLite® Plus 488-conjugated IRF5 Monoclonal antibody

Catalog Number:CL488-66835



Basic Information

Catalog Number: CL488-66835	GenBank Accession Number: BC004201	Purification Method: Protein G purification
Size: 100ul , Concentration: 1000 ug/ml by Nanodrop;	GeneID (NCBI): 3663	CloneNo.: 3A4A10
Source: Mouse	UNIPROT ID: Q13568	Recommended Dilutions: IF/ICC 1:50-1:500
Isotype: IgG1	Full Name: interferon regulatory factor 5	Excitation/Emission maxima wavelengths: 493 nm / 522 nm
Immunogen Catalog Number: AG5442	Calculated MW: 56 kDa	
	Observed MW: 56 kDa	

Applications

Tested Applications: IF/ICC	Positive Controls: IF/ICC : HepG2 cells,
Species Specificity: Human, mouse	

Background Information

IRF5, also named as SLEB10, contains one IRF tryptophan pentad repeat DNA-binding domain and belongs to the IRF family. It is a transcription factor involved in the induction of interferons IFNA and INFB and inflammatory cytokines upon virus infection. It is activated by TLR7 or TLR8 signaling. Genetic variations in IRF5 are associated with susceptibility to inflammatory bowel disease type 14 (IBD14) and systemic lupus erythematosus type 10 (SLEB10). IRF5 is also used as M1 macrophage lineage marker. Alternative splice variant encoding different isoforms exist.

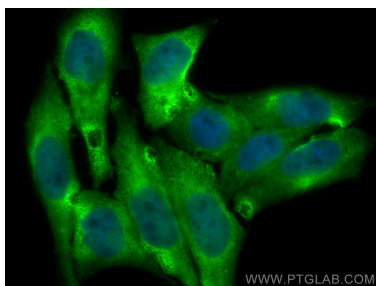
Storage

Storage:
Store at -20°C. Avoid exposure to light. Stable for one year after shipment.
Storage Buffer:
PBS with 50% Glycerol, 0.05% Proclin300, 0.5% BSA, pH 7.3.
Aliquoting is unnecessary for -20°C storage

For technical support and original validation data for this product please contact:
T: 1 (888) 4PTGLAB (1-888-478-4522) (toll free in USA), or 1(312) 455-8498 (outside USA)
E: proteintech@ptglab.com
W: ptglab.com

This product is exclusively available under Proteintech Group brand and is not available to purchase from any other manufacturer.

Selected Validation Data



Immunofluorescent analysis of (4% PFA) fixed HepG2 cells using Coralite® Plus 488 IRF5 antibody (CL488-66835, Clone: 3A4A10) at dilution of 1:200.