

For Research Use Only

CoraLite® Plus 488-conjugated CDC25C Monoclonal antibody

Catalog Number: CL488-66912



Basic Information

| | | |
|--|--|---|
| Catalog Number: CL488-66912 | GenBank Accession Number: BC019089 | Purification Method: Protein G purification |
| Size: 100ul , Concentration: 1000 ug/ml by Nanodrop; | GeneID (NCBI): 995 | CloneNo.: 2B6B12 |
| Source: Mouse | UNIPROT ID: P30307 | Excitation/Emission maxima wavelengths: 493 nm / 522 nm |
| Isotype: IgG1 | Full Name: cell division cycle 25 homolog C (S. pombe) | |
| Immunogen Catalog Number: AG10240 | Calculated MW: 473 aa, 53 kDa | |
| | Observed MW: 46-53 kDa | |

Applications

Tested Applications:
FC (Intra)

Species Specificity:
human, mouse, rat

Background Information

The cell division cycle 25 (CDC25) family of proteins are highly conserved dual specificity phosphatases that activate cyclin-dependent kinase (CDK) complexes, which in turn regulate progression through the cell division cycle. CDC25C (cell division cycle 25 homolog C) is one of the 3 isoforms of CDC25 in mammalian cells. It is present in the cytoplasm of asynchronously growing human cells (PMID:10330186). And it may be phosphorylated by its own substrate, an active cdc2-cyclin B complex, to create an autoactivation loop (PMID:7937793). It can be hyperphosphorylated to get the active form of 70 kDa (PMID:18296513). CDC25C has some isoforms with molecular mass of 46-53 kDa.

Storage

Storage:
Store at -20°C. Avoid exposure to light. Stable for one year after shipment.

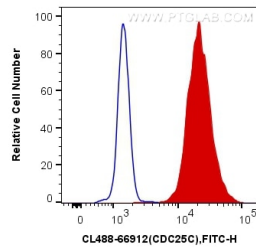
Storage Buffer:
PBS with 50% Glycerol, 0.05% Proclin300, 0.5% BSA, pH 7.3.

Aliquoting is unnecessary for -20°C storage

For technical support and original validation data for this product please contact:
T: 1 (888) 4PTGLAB (1-888-478-4522) (toll free in USA), or 1(312) 455-8498 (outside USA)
E: proteintech@ptglab.com
W: ptglab.com

This product is exclusively available under Proteintech Group brand and is not available to purchase from any other manufacturer.

Selected Validation Data



1X10⁶ K-562 cells were intracellularly stained with 0.4 ug CoraLite® Plus 488 Anti-Human CDC25C (CL488-66912, Clone:2B6B12) (red), or 0.4 ug Control Antibody. Cells were fixed and permeabilized with Transcription Factor Staining Buffer Kit (PF00011).