

For Research Use Only

CoraLite® Plus 488-conjugated TIMELESS Monoclonal antibody

Catalog Number: CL488-67022

Featured Product



Basic Information

Catalog Number:

CL488-67022

Size:

100ul , Concentration: 1000 ug/ml by Nanodrop;

Source:

Mouse

Isotype:

IgG1

Immunogen Catalog Number:

AG6283

GenBank Accession Number:

BC050557

GeneID (NCBI):

8914

UNIPROT ID:

Q9UNS1

Full Name:

timeless homolog (Drosophila)

Calculated MW:

139 kDa

Observed MW:

140 kDa

Purification Method:

Protein G purification

CloneNo.:

1B6G3

Recommended Dilutions:

FC (Intra): 0.80 ug per 10⁶ cells in a 100 µl suspension

FC: 0.80 ug per 10⁶ cells in a 100 µl suspension

Excitation/Emission maxima wavelengths:

493 nm / 522 nm

Applications

Tested Applications:

FC (Intra)

Species Specificity:

Human, Mouse, Rat

Positive Controls:

FC (Intra) : HEK-293 cells,

FC : HEK-293 cells,

Background Information

TIMELESS1 (TIM1) gene encodes protein timeless homolog belonging to timeless family. TIM1 is localized in nucleus and regulated by cell cycle. It expresses high levels in S, G2 and M phases, and low in G0 and G1 phases. TIM1 is involved in the circadian rhythm autoregulatory loop and is a crucial component of the circadian core oscillator, which includes the CRY proteins, CLOCK, NPAS2, etc. It is also involved in cell survival after DNA damage or replication stress and reported to play important role in epithelial cell morphogenesis and formation of branching tubules.

Storage

Storage:

Store at -20°C. Avoid exposure to light. Stable for one year after shipment.

Storage Buffer:

PBS with 50% glycerol, 0.05% Proclin300, 0.5% BSA, pH7.3

Aliquoting is unnecessary for -20°C storage

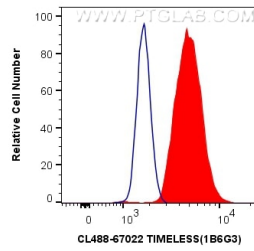
For technical support and original validation data for this product please contact:

T: 1 (888) 4PTGLAB (1-888-478-4522) (toll free in USA), or 1(312) 455-8498 (outside USA)

E: proteintech@ptglab.com
W: ptglab.com

This product is exclusively available under Proteintech Group brand and is not available to purchase from any other manufacturer.

Selected Validation Data



1X10⁶ HEK-293 cells were intracellularly stained with 0.8 ug CoraLite® Plus 488 Anti-Human TIMELESS (CL488-67022, Clone:1B6G3) (red), or 0.8 ug Control Antibody. Cells were fixed and permeabilized with Transcription Factor Staining Buffer Kit (PF00011).