

For Research Use Only

CoraLite® Plus 488-conjugated DNAJA1 Monoclonal antibody

Catalog Number: CL488-67184

Featured Product



Basic Information

Catalog Number:

CL488-67184

Size:

100ul , Concentration: 1000 ug/ml by Nanodrop;

Source:

Mouse

Isotype:

IgM

Immunogen Catalog Number:

AG2284

GenBank Accession Number:

BC008182

GeneID (NCBI):

3301

UNIPROT ID:

P31689

Full Name:

DnaJ (Hsp40) homolog, subfamily A, member 1

Calculated MW:

397 aa, 45 kDa

Observed MW:

45 kDa

Purification Method:

Euglobulin precipitation

CloneNo.:

1B10A10

Recommended Dilutions:

IF/ICC 1:50-1:500

Excitation/Emission maxima

wavelengths:

493 nm / 522 nm

Applications

Tested Applications:

IF/ICC

Species Specificity:

Human, mouse, rat

Positive Controls:

IF/ICC : HepG2 cells,

Background Information

DNAJA1 is a member of the DnaJ proteins (also known as Hsp40 or Hsc40) which are cochaperones to DnaK (Hsp70) and function to modulate protein assembly, disassembly, and translocation. DNAJA1 has been reported to get involved in various processes, including virus infection, tau clearance, and mutant p53 degradation.

Storage

Storage:

Store at -20°C. Avoid exposure to light. Stable for one year after shipment.

Storage Buffer:

PBS with 50% Glycerol, 0.05% Proclin300, 0.5% BSA, pH 7.3.

Aliquoting is unnecessary for -20°C storage

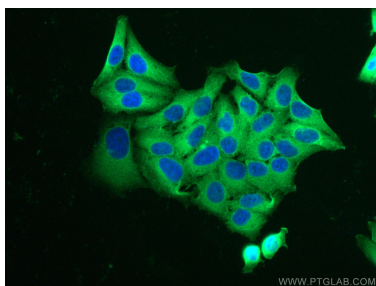
For technical support and original validation data for this product please contact:

T: 1 (888) 4PTGLAB (1-888-478-4522) (toll free in USA), or 1(312) 455-8498 (outside USA)

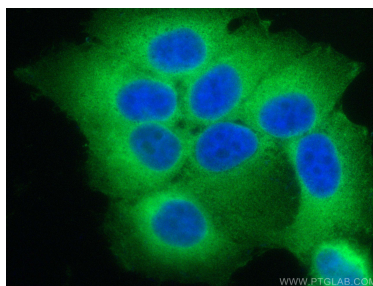
E: proteintech@ptglab.com
W: ptglab.com

This product is exclusively available under Proteintech Group brand and is not available to purchase from any other manufacturer.

Selected Validation Data



Immunofluorescent analysis of (4% PFA) fixed HepG2 cells using CoraLite® Plus 488 DNAJA1 antibody (CL488-67184, Clone: 1B10A10) at dilution of 1:200.



Immunofluorescent analysis of (4% PFA) fixed HepG2 cells using CoraLite® Plus 488 DNAJA1 antibody (CL488-67184, Clone: 1B10A10) at dilution of 1:200.