

For Research Use Only

CoraLite® Plus 488-conjugated CYP2E1-Specific Monoclonal antibody

Catalog Number: CL488-67263



Basic Information

| | | |
|--|--|---|
| Catalog Number: CL488-67263 | GenBank Accession Number: NM_000773 | Purification Method: Protein A purification |
| Size: 100ul , Concentration: 1000 ug/ml by Nanodrop; | GeneID (NCBI): 1571 | CloneNo.: 1F12G7 |
| Source: Mouse | UNIPROT ID: P05181 | Recommended Dilutions: IF-P 1:50-1:500 |
| Isotype: IgG2b | Full Name: cytochrome P450, family 2, subfamily E, polypeptide 1 | Excitation/Emission maxima wavelengths: 493 nm / 522 nm |
| | Calculated MW: 57 kDa | |
| | Observed MW: 50-57 kDa | |

Applications

| | |
|---|---|
| Tested Applications: IF-P | Positive Controls: IF-P : mouse liver tissue, |
| Species Specificity: mouse, rat, pig, human | |

Background Information

CYP2E1, also named as CYP11E1, 4-nitrophenol 2-hydroxylase, P450-J and CYP2E, belongs to the cytochrome P450 family. CYP2E1 metabolizes several precarcinogens, drugs, and solvents to reactive metabolites. It inactivates a number of drugs and xenobiotics and also bioactivates many xenobiotic substrates to their hepatotoxic or carcinogenic forms. CYP2E1 catalyze the reaction: 4-nitrophenol + NADPH + O₂ = 4-nitrocatechol + NADP⁺ + H₂O. CYP2E1 can be detected as 50-57 kDa(full-length) and ~40 kDa(N-terminal signal peptide cleaved) (PMID: 21130154). The antibody is specific to CYP2E1.

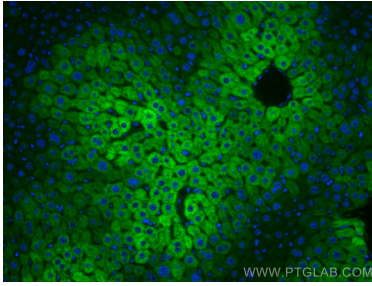
Storage

Storage:
Store at -20°C. Avoid exposure to light. Stable for one year after shipment.
Storage Buffer:
PBS with 50% Glycerol, 0.05% Proclin300, 0.5% BSA, pH 7.3.
Aliquoting is unnecessary for -20°C storage

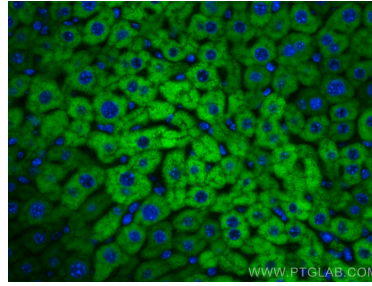
For technical support and original validation data for this product please contact:
T: 1 (888) 4PTGLAB (1-888-478-4522) (toll free in USA), or 1(312) 455-8498 (outside USA)
E: proteintech@ptglab.com
W: ptglab.com

This product is exclusively available under Proteintech Group brand and is not available to purchase from any other manufacturer.

Selected Validation Data



Immunofluorescent analysis of (4% PFA) fixed mouse liver tissue using CoraLite® Plus 488 CYP2E1-Specific antibody (CL488-67263, Clone: 1F12G7) at dilution of 1:200.



Immunofluorescent analysis of (4% PFA) fixed mouse liver tissue using CoraLite® Plus 488 CYP2E1-Specific antibody (CL488-67263, Clone: 1F12G7) at dilution of 1:200.