

For Research Use Only

CoraLite® Plus 488-conjugated ADH4 Monoclonal antibody

Catalog Number: CL488-67303



Basic Information

Catalog Number:

CL488-67303

Size:

100ul , Concentration: 1000 ug/ml by Nanodrop;

Source:

Mouse

Isotype:

IgG1

Immunogen Catalog Number:

AG9884

GenBank Accession Number:

BC022319

GeneID (NCBI):

127

UNIPROT ID:

P08319

Full Name:

alcohol dehydrogenase 4 (class II), pi polypeptide

Calculated MW:

380 aa, 40 kDa

Observed MW:

40-43 kDa

Purification Method:

Protein G purification

CloneNo.:

3D12E9

Recommended Dilutions:

IF/ICC 1:50-1:500

Excitation/Emission maxima

wavelengths:

493 nm / 522 nm

Applications

Tested Applications:

IF/ICC

Species Specificity:

Human

Positive Controls:

IF/ICC : HepG2 cells,

Background Information

This gene encodes the class II alcohol dehydrogenase 4 pi subunit, which is a member of the alcohol dehydrogenase family. Members of this enzyme family metabolize a wide variety of substrates, including ethanol, retinol, other aliphatic alcohols, hydroxysteroids, and lipid peroxidation products. Class II alcohol dehydrogenase is a homodimer composed of 2 pi subunits. ADH4 plays a critical role in alcoholism development and alcohol toxicology and is also associated with the development of esophageal cancer(PMID:33556337, 26039424, 24051444, 22147505).

Storage

Storage:

Store at -20°C. Avoid exposure to light. Stable for one year after shipment.

Storage Buffer:

PBS with 50% Glycerol, 0.05% Proclin300, 0.5% BSA, pH 7.3.

Aliquoting is unnecessary for -20°C storage

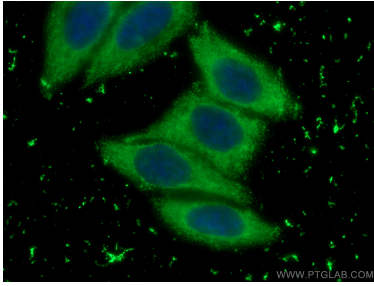
For technical support and original validation data for this product please contact:

T: 1 (888) 4PTGLAB (1-888-478-4522) (toll free in USA), or 1(312) 455-8498 (outside USA)

E: proteintech@ptglab.com
W: ptglab.com

This product is exclusively available under Proteintech Group brand and is not available to purchase from any other manufacturer.

Selected Validation Data



Immunofluorescent analysis of (-20°C Ethanol) fixed HepG2 cells using CoraLite® Plus 488 ADH4 antibody (CL488-67303, Clone: 3D12E9) at dilution of 1:200.